

WILBRAHAM PUBLIC LIBRARY



A15801 349373

A large, stylized number '7' composed of dark green rectangular blocks. The top bar is a solid dark green rectangle. The vertical stem is a dark green rectangle with a white-outlined rectangular cutout in its upper portion. The bottom bar is a solid dark green rectangle. The number '7' is positioned above the text 'FALCON 65'.

FALCON 65



WILBRAHAM PUBLIC LIBRARY







NINETEEN HUNDRED SIXTY FIVE

falcon

Minnechaug Regional High School
Wilbraham, Massachusetts



All of a sudden we have reached
The crest of the Hill named Minnechaug,
And we face the Mountain called Life.
There is still a long way to go,
So let us rest awhile and remember . . .
We cannot be pushed off this summit
Where our flag newly unfurls,
And expect to grow up overnight --
We will carry portions of this
Never-never land with us forever
Where:

Praise was accepted quietly for a job well done,
And given generously to both the loud and the small,
Bleachers were filled with green-and-whites,
And "ref's an old root!!!" could be heard boogingly;
Friends, friends and faculty could talk quietly for a better under-
standing.

And when they ask about us much later, saying,
"Who was that man on the white stallion?"
Some will say, "I don't know."
But they will all treasure the silver bullet.

R.N.





Life is communication. Miss Little has communicated to Minnechaug as head of the English department and faculty advisor to the SMOKE SIGNAL and the SCROLL. She has shared her experiences from North Carolina, Turkey, and England with many students. Through her endeavors as a teacher, Miss Little was selected as "Teacher of the Year 1964-1965" in the state of Massachusetts. We, the Class of 1965, also would like to pay tribute to Miss Little for having communicated to us a wider view of life.

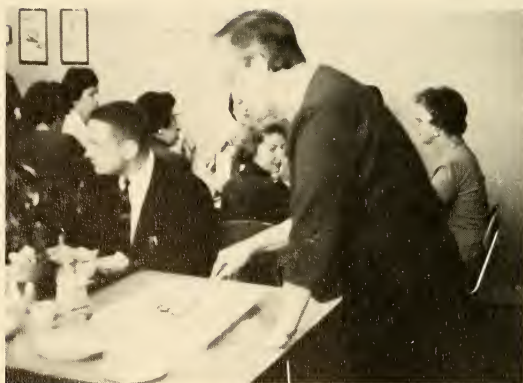


Table of Contents



academics 6



activities 74

athletics 98



academics



Superintendent



Mr. Irving Agard

Mr. Kenneth Johnson

TO THE CLASS OF 1965:

We have enjoyed watching you grow as a class and as individuals; you have contributed much to the growing tradition of Minnechaug as a school of high academic achievement. Your leadership, determination, and continued efforts in athletic competition have brought new recognition to your school. The class of 1965 has established an excellent record at Minnechaug.

Principal

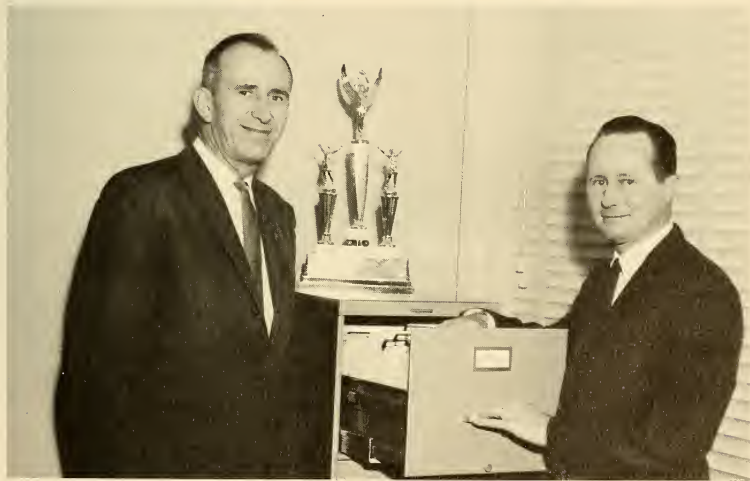
TO THE CLASS OF 1965:

The last four years have seen you grow remarkably in both stature and wisdom. The challenges you have encountered, and successes you have achieved while at Minnechaug, are but samples of those that lie ahead in the diverse paths that you will tread. Keep faith in your better judgement, retain concern for the family of man, and find something worthwhile to contribute each day which will bring lasting enjoyment to you and your community.

We congratulate you on your accomplishments to date and wish you well as you seek your niche in the future.

Mr. Lincoln Dexter

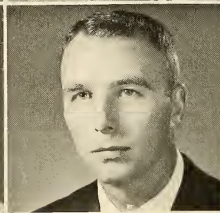
Mr. Richard Trenholm





Miss Vivian Little, chairman
Smoke Signal
Scroll

Mrs. Constance Kimberly
Drama Club



Mrs. Jean O'Neil
Falcon Advisor
Junior Honor Society

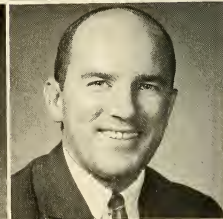
Richard Spencer
Tennis Coach
Asst. Football Coach
Junior Class Advisor

English

Miss Barbara Prackneck



Mrs. Rosemary Bauer



Ronald Hofmann

George Robinson, chairman
Faculty Manager, Ath.

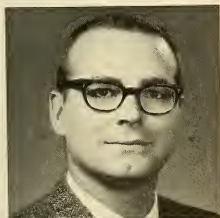
Miss Helen Walinski
Cheerleaders



Edgar Law
Football Coach



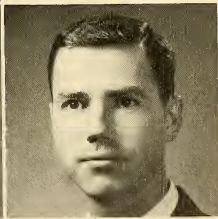
Mathematics



John Peterson

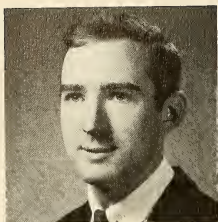


Michael Murphy



Lawrence Bergmann

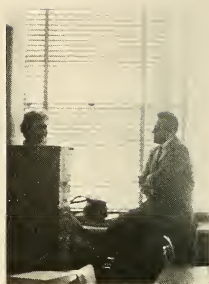




Robert McCarthy, chairman
French Club



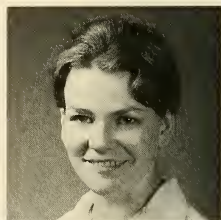
Mrs. Marilyn Ats
National Honor Society



Languages



Miss Margaret Fey
Spanish Club



Mrs. Valeda Robinson



Mrs. Sharon Horton
Speech Therapist



Richard Brown, chairman



Harold Miller
Swimming Coach
Asst. Football Coach



Science



Karl Sternberg
Senior Class Advisor



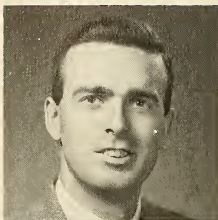
Jerry Badger
Sophomore Class Advisor
Cross-Country Coach
Asst. Swimming Coach



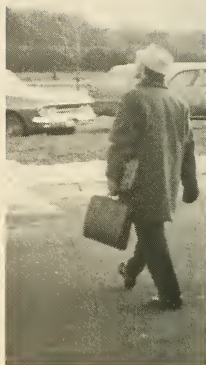
Mrs. Madelene Newsome
School Nurse



History



David Barry, chairman
Activity chairman



William Burke

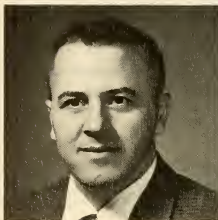


Mario Kacoyannakis
Audio Visual

Business



Mrs. Christine Trenholm,
chairman
Student Publications:
Production

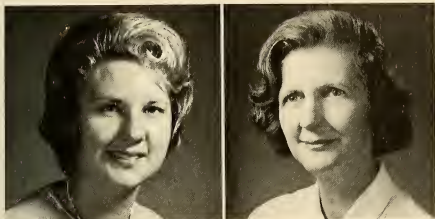


Louis Verani
Asst. Basketball Coach
Asst. Track Coach



Mrs. Jean Stuart

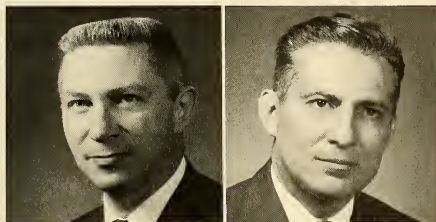
Home Economics



Miss Judith Cross, chairman
Freshman Class, Advisor

Mrs. Katherine Goulding

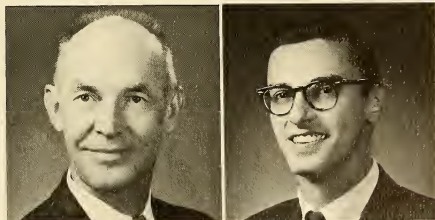
Art



Joseph Van West, chairman
Student Council

Walter Battershall

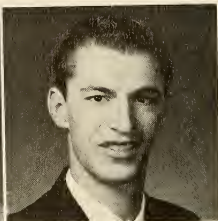
Guidance



Charles Thompson, chairman
Track Coach

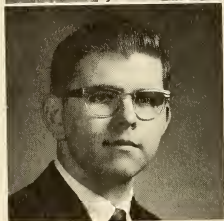
Peter Gartner
Basketball Coach

Industrial Arts



James DeWolf, chairman
Asst. Soccer Coach
Golf Coach

Henry Manegre



David Munsey

Physical Education

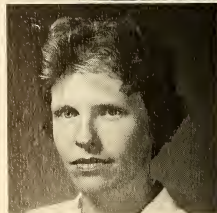
William Kober, chairman
Soccer Coach
Asst. Gymnastics Coach

Alf Ehnstrom
Gymnastics Coach
Baseball Coach



Mrs. Marcia Dennison
Girls' Basketball
Girls' Swim Team

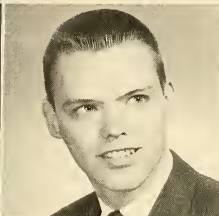
Mrs. Maureen Miller
Drill Team
Girls' Gymnastics
Field Hockey



Music



Dwight Killam, Chairman
Choralyres Director
Jr. Choralyres Director



Donald Short
Orchestra Director

Charles Beeler
Band Director
Swingband Director

Librarian

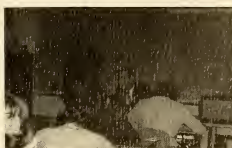


Mrs. Dorothy Marot

Remedial



Paul Deslauriers
Asst. Football Coach





Superintendents Staff

Mrs. Anna Tupper
Mrs. Eva Ellis
Miss Patricia Frydryk
Mrs. Madelyn Howe



Office Staff

Miss Joan Mackuch
Mrs. Cammella Kerr
Mrs. Marjorie Bean

Cafeteria Staff

Mrs. Marie Tupper
Mrs. Edith Wickett
Mrs. Leona Isham
Mrs. Nancy Clark
Mrs. May Jenkins
Mrs. Arlene Ross



Custodian Staff

Harold Rogers
Everett Pickens
Stanley Strycharz
Leon Superneau
Walter Polanzak







SENIORS





To the class of 1965; In an age when people tend to pre-occupy themselves all too often with concern over the fate of the world in the hands of the so-called "younger generation," I find considerable satisfaction in the knowledge that you, too, will be contributing to society in the years to come. Your four years here have reflected great credit upon you and upon Minnechaug. I am confident that your individual efforts in future years will continue to yield achievements of which we may all be truly proud. My congratulations upon your graduation, and sincere best wishes to each of you in the years to come.

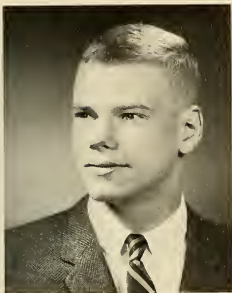
Senior Class Officers

Wes Mueller -- Vice-President
Brian Braskie -- President

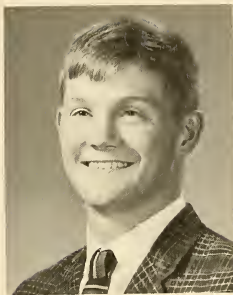
Walt Damon -- Treasurer
Laurie Shannis -- Secretary

Karl D. Sternberg
Advisor, Class of '65

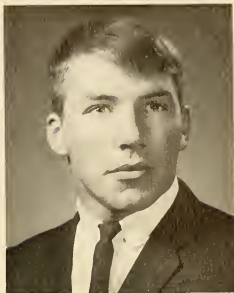




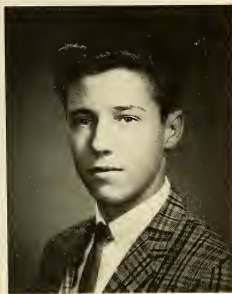
JOHN S. ADDIS



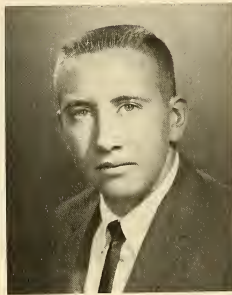
IRVING H. AGARD



JEFFREY ALLEN



JOHN ANDERSON



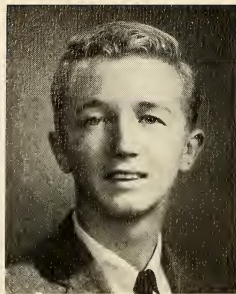
JOSEPH P. ANDERSON



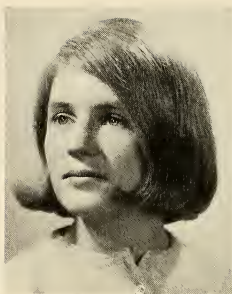
HAROLD ARMITAGE

JOHN S. ADDIS, Football 1, 2, 3, 4; Track 1, 2, 3, Co-Capt. 4; Student Council 1; Slide Rule Club 3; Nat. Junior Honor Society 2; Nat. Honor Society 3, 4; Taxidermy 2; Camera Club 1; Bridge Club 3; Chess Club 3; French Club 1; Leader's Club 2, 3, 4; SMOKE SIGNAL 4; Sr. Exec. Board 4; Wrestling Club 3; Mathletes 4.
 IRVING H. AGARD, Basketball 1, 2; Football 1, 2, 3, 4; Golf 1, 2; Track 3, 4; Monitor 4; Student Council 4; SMOKE SIGNAL 1, 2, 3, 4; FALCON 4; Nat. Honor Society 3, 4; Historical Issues 3; Leader's Club 3, 4; Wrestling Club 3; Mathletes 4.
 JEFFREY ALLEN, Football 1; Tennis 1; Pep Club 2; Leader's Club 2; Office Help 2, 4.
 JOHN ANDERSON, Soccer 1, 2, 3, 4; Track 1, 2; Pep Club 2; Tech. Drawing Club 3; Wood Carving 2.
 JOSEPH P. ANDERSON, Golf 1, 4; Swim Team 1, 2, 3, 4; Student Council 4.
 HAROLD ARMITAGE, Track 1; Baseball 2, 3, 4; Gymnastics 2, 3, 4; Soccer 2, 3, 4.

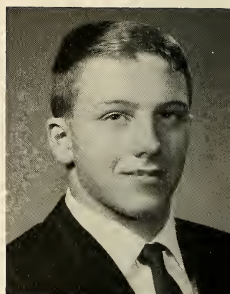




MICHAEL JOHN ASHE



LENORE A. BABINEAU



JOSEPH BAKER



ALICE BALLOU



CAROL ANNE BARNES



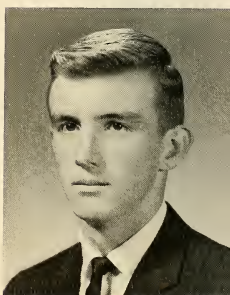
JOANNE T. BATESON



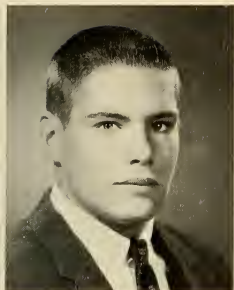
SUSAN L. BAYERLE



CYNTHIA M. BEAN



PAUL BEAUDOIN



DONALD R. BENNETT



PATRICIA A. BERNARD



JOHN BERNET, JR.



MICHAEL JOHN ASHE, Chess Club 1, 2, 3, 4; Coin Club 1, 2, 3; Lib. Service Club 1, 2, 3; Wrestling Club 3.

LENORE A. BABINEAU, Field Hockey 2, 3, Co-Capt. 4; Art Club 2, 3; Bridge Club 2; FALCON 3, 4; Jr. Prom Committee 3; Jr. Exec. Board 3; Leader's Club 3; Nat. Honor Society 3, 4; Student Council 1; Student Hostesses 3, 4.

JOSEPH BAKER, Art Club 3; Chef's Club 3, 4; Pep Club 2; Woodcarving 1, 2; Office Help 3, 4.

ALICE BALLOU, Art Club 1, 2; Drama Club 1, 2, 3; Lib. Service Club 4; Red Cross 3, 4; Sewing Club 4; Hootenanny Club 3; Pep Club 3; Jr. Prom Committee 3; Unicef Club 3.

CAROL ANNE BARNES, Jr. Choralyres 1; Choralyres 2, 3, 4; Mixed Chorus 1; Red Cross 3; Jr. Ensemble 3; Sr. Ensemble 4; Bridge Club 1, 2, 4; French Club 1, 2; Hootenanny Club 3; Pep Club 2, 3; Spanish Club 3.

JOANNE T. BATESON, Basketball 3, 4; Drill Team 4; Field Hockey 3, 4; FALCON 4; French Club 1, 2; F. T. A. 1; Jr. Prom Committee 3; Leader's Club 3, 4; Student Hostesses 4; Mixed Chorus 1.

SUSAN L. BAYERLE, Drill Team 4; Band 2, 3, 4; Cryptology Club 3; Home Nursing Club 3; Jr. Prom Committee 3; Pep Club 2, 3, 4; Sewing Club 4.

CYNTHIA M. BEAN, Basketball 3, 4; Field Hockey 3, 4; Mixed Chorus 1; FALCON 3; French Club 1, 2, 3, Pres. 4; SMOKE SIGNAL 4; Sr. Exec. Board 4; Jr. Prom Committee 3; Lib. Service Club 3, 4.

PAUL BEAUDOIN, Entered 1963; Golf 3, 4; Basketball 3; Chef's Club 4; Sports Car Club 4.

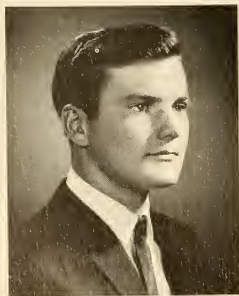
DONALD R. BENNETT, Football 2, 3, 4; Track 1, 2, 3, 4; Bridge Club 2; Chess Club 3, 4; Taxidermy Club 2; Wrestling Club 3, 4; Electronics Club 1, 2.

PATRICIA ANN BERNARD, Field Hockey 4; Girls' Industrial Arts 3; Journalism 2; Knitting Club 2; Pep Club 2, 3, Pres. 4; Drama Club 2; SMOKE SIGNAL 1, 2, 3, 4; Wood Carving 3.

JOHN BERNET, JR., Gymnastics 2; Chef's Club 3, 4; Sports Car Club 4; Wrestling Club 3; Woodcarving 2.



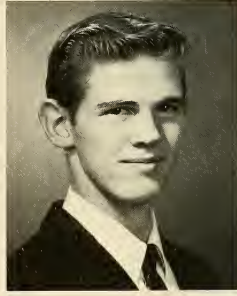
CARLETON H. BEVERLY, Soccer 1, 2, 3; Tennis 1, 2, 3, 4; Electronics Club 2; Chess Club 1, 2, 3, 4; Taxidermy Club 2; Woodcarving 1; Wrestling Club 3, 4.
 CAROL BINGLE, Entered 1963; Bridge Club 3, 4; Typing Club 3.
 LESTER C. BLISS, Sports Car Club 4; Chef's Club 3, 4; Pep Club 2; Wood Carving 2; Wrestling Club 3.
 BRIAN T. BRASKIE, Basketball 1, 2, 3, 4; Track 2; Soccer 1, 2, 4; Art Club 3; Chef's Club 3; Monitor 4; Class President 2, 4.
 JAMES BREADY, Sports Car Club 4; Wrestling Club 3.
 BARBARA BRITAIN, Entered 1963; Knitting Club 3; Red Cross 4; Typing Club 3.
 VIRGINIA BROOKS, Drill Team 2, 3, 4; Field Hockey 3, 4; Gymnastics 3, 4; Swim Team 1; Synco. 1, 2, 3, 4; Basketball 3, 4; Art Club 1, 3, 4; Bridge Club 1, 2, 3, 4; Drama Club Sec. 1; FALCON 4; French Club 3; F. T. A. Treas. 1; G. A. A. 2; Leader's Club 2, 3, 4; Jr. Prom Committee 3; Nat. Honor Society 3, 4; Student Hostesses 3, 4; Sr. Exec. Board 4.
 RICHARD BROWN, Chess Club 1, 2, 3, 4; International Relations 4.
 CHARLOTTE A. BRUSKA, Entered 1963; Synco 3, 4; Choralyres 3, 4; Nat. Honor Society 3, 4; Basketball 3; Monitor 4; Student Council 3; Jr. Prom Committee 3; Student Hostesses 4; Triple Trio 3, 4; FALCON Editor 4.
 JANE ANN BULGER, Drill Team 2, 3; Chanteuses 2; Choralyres 2, 3, 4; Jr. Choralyres 1; Mixed Chorus 1; Triple Trio 2, 3, 4; Western Mass. Chorus 3; Art Club 3; F. T. A. 1; Knitting Club 3; Leader's Club 2; Pep Club 2; Student Council 2; Student Hostesses 3, 4; Hist. Art Club 3.
 MARSHA B. CADY, Entered 1964; Rec. Chorus 4.
 THOMAS HOLBROOK CAMPBELL, Golf 1, 2; Soccer 1, 2, 3, 4; Swim Team 1, 2, 3, Capt. 4; Trace 3; Biology Club 2; Leader's Club 2, 3, 4; Nat. Honor Society 3, 4; Student Council 1, 2; Wood Carving 2; Monitor 4.



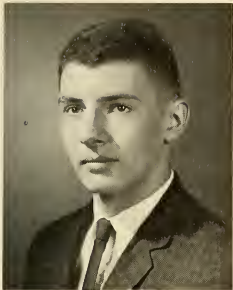
CARLETON H. BEVERLY



CAROL BINGLE



LESTER C. BLISS



BRIAN T. BRASKIE



JAMES BREADY



BARBARA BRITTAIN



VIRGINIA BROOKS



RICHARD BROWN



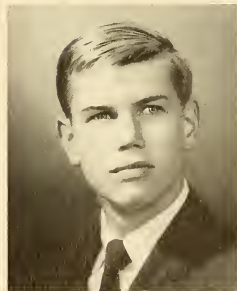
CHARLOTTE A. BRUSKA



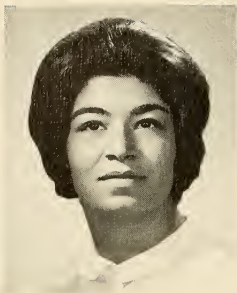
JANE ANN BULGER



MARSHA B. CADY



THOMAS HOLBROOK CAMPBELL



NANCY CAROGLIAN

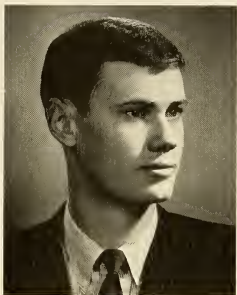
NANCY CAROGLIAN, Drill Team 2, 3, 4; Jr. Choralyres 2; Bridge Club 1, 3; Cryptology Club 3; Drama Club 1, 2, 3; FALCON 3, 4; French Club 1, 4; Hootenanny Club 3, 4; Knitting Club 2; Nat. Jr. Honor Society 2; Pep Club 2; School Store 2.

WENDELL PHILLIPS CHAMBERLAIN, II, Basketball 1; Track 1, 2; Hist. Arts Club Treas. 3; Pep Club 2; Student Council 1; Jazz Listening Club 3; Music Study 3.

ALAN B. CHRISTENSEN, Cross-Country 2; Golf 1, 2, 3, 4; Chef's Club 4; Chess Club 1, 3; Coin Club 1.

PHYLLIS CLARK, Choralyres 3, 4; Jr. Choralyres 2; Rec. Chorus 2, 3, 4; Trio '65 3, 4; Pep Club 1, 2, 3, 4; Sewing Club 4; SMOKE SIGNAL 3, 4; Student Hostesses 4.

SANDRA CLARKSON, Gymnastics 2, 3, 4; Swimming 1, 2; Syncho. 1, 2, 3, 4; Mixed Chorus 1; Rec. Chorus 4; Hootenanny 3, 4; Lib. Service Club 3, Vice-pres. 4; Pep Club 2; Office Help 4.



WENDELL PHILLIPS CHAMBERLAIN, II

FREDERICK R. COLTON, Football 1; Swimming 1; Tennis 1, 2, 3, 4; Electronics Club 1, 2; Pep Club 1, 2, 3; Red Cross 1; Student Council 4; Hist. Arts Club Vice-pres. 3.

LINDA CZUPRYNA, Mixed Chorus 1; Rec. Chorus 3; Camera Club 1; Chess Club 1; Pep Club 3, 4; School Store 2, 3; Wood Carving 1.

WALTER H. DAMON!, Basketball 1, 2; Baseball 1, 2, 3, 4; Class Treas. 1, 2, 4; F. T. A. 4; Leaders Club 4; Monitor 4.

KENNETH DAY, Entered 1963; Tennis 3, 4; Football Manager 4; Nat. Honor Society 3, 4; Mathletes 4; Chess Club 4; Debate Club 4; Math Club 4.

CHARLENE DEANE, Field Hockey 1, 2, 3; Bridge Club 1, 3, 4; G. A. A. 2; School Store 1, 2.

RAMONA L. DE MARCO, Swimming 1; Chanteuses 1; Choralyres 4; Mixed Chorus 1; Art Club 4; Hootenanny 4.

JANE E. DENNISS, Gymnastics 2, 3, 4; Swimming 1; Bridge Club 1, 2, 3, 4; F. T. A. 1, 2; Jr. Prom Committee; Leader's Club 3, 4; Lib. Service Club 1, 2, 3, Sec. -Treas. 4; Pep Club 2, 3; School Store 1; Student Hostesses 4; Monitor 4; Gymnastics Club 1.



ALAN B. CHRISTENSEN

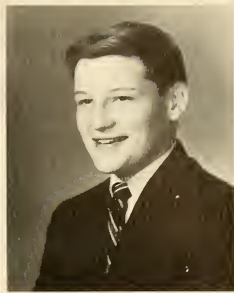




PHYLLIS CLARK



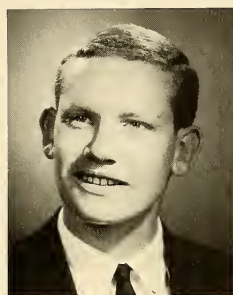
SANDRA CLARKSON



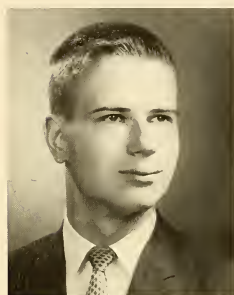
FREDERICK R. COLTON



LINDA CZUPRYNA



WALTER H. DAMON



KENNETH DAY



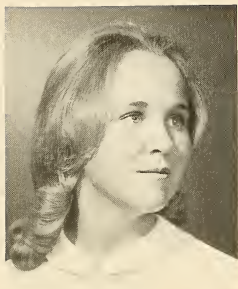
CHARLENE DEANE



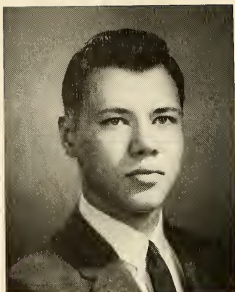
RAMONA L. DE MARCO



JANE E. DENNIS



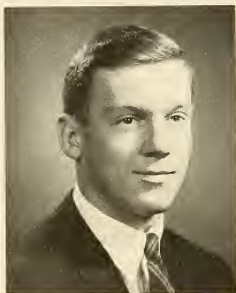
HARRIET DEXTER



BRIAN DOLLAR



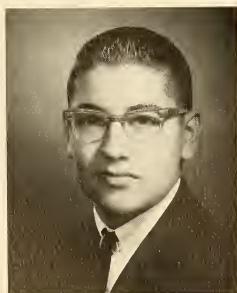
KATHRYN T. DONOHUE



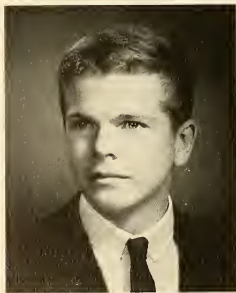
WILLIAM P. DOUGAL



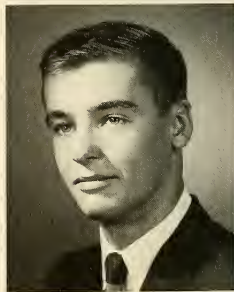
BARBARA DULUDE



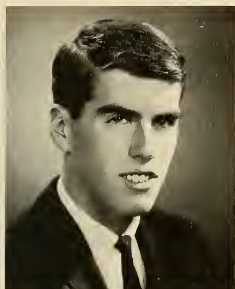
ROBERT A. ESPOSITO



STEPHEN W. FAIRBANKS



BYRON FISH



PATRICK FLEMING



COLLEEN JOHANNA FLYNN



JUDITH ANN FRANCIS

HARRIET DEXTER, Mixed Chorus 1; Art Club 1, 2; Bridge Club 1; Drama Club 1, 2; FALCON 4; Hootenanny 4; Lib. Service Club 1; Pep Club 2; School Store 2, 3; Student Hostesses 3, 4; Monitor 4; Field Hockey 3, 4; Basketball 3, 4; Drill Team 3.

BRIAN DOLLAR, Swim Team 1; Red Cross 1; Gymnastics 2; Coin Club 2, 3; Electronics Club 2; Wrestling Club 3.

KATHRYN T. DONOHUE, Swim Team 1, 2, 3, 4; Synco 1, 2, 3, 4; Bridge Club 4; Camera Club 2; Chess Club 4; Drama Club 1; Jr. Prom Committee 3; Knitting Club 2, 3; Red Cross 2; Stagecraft 4.

WILLIAM P. DOUGAL, Cross-Country 1, 2, 3, 4; Track 2, 3; Chess Club 1, 2; Debate Club 3; Drama Club 1; Historical Issues 1, 2, 3; Great Men 2, 3; Leader's Club 1; Nat. Junior Honor Society 2; Question Club 3; Student Council 1, 2; Reading Club 2; Latin Award 2, 3; History Award 1, 2.

BARBARA DULUDE, Entered 1962; Drill Team 3, 4; Pep Club 2, 3, 4; Typing Club 3.

DONALD ELDRIDGE, Entered 1963; Gymnastics 4; Swim Team 3.

ROBERT A. ESPOSITO, Band 1, 2, 3, 4; Orchestra 1, 2; Swing Band 1, 2, 3, 4; Chef's Club 3, 4; Math Club 3; Camera Club 1; Biology Club 2; Student Council 3; Swim Team 3, 4; Nat. Junior Honor Society 1, 2; Nat. Honor Society 3, 4.

STEPHEN W. FAIRBANKS, Entered 1963; Basketball 3, 4.

BYRON FISH, Gymnastics 1, 2, 3, 4; Tennis 4; Track 3; A. V. Club 3; Cryptology Club 3; Jr. Exec. Board 3; Leader's Club 1, 2, 3, 4; Student Council 3, 4; Monitor 4.

PATRICK FLEMING, Gymnastics 1, 2, 3, 4; Track 2, 3, 4; Leader's Club 2, 3; FALCON 4.

COLLEEN JOHANNA FLYNN, J. V. Cheerleading 1; Mixed Chorus 1; Art Club 2, 3, 4; Bridge Club 3, 4; Girls' Industrial Arts Club 3; Knitting Club 3; Hootenanny Club 3; Leader's Club 2; Jr. Prom Committee 3; Office Help 3; Red Cross 3; Jazz Listening Club 3.

JUDITH ANN FRANCIS, Lib. Service Club 3, 4; Office Help 1; Pep Club 1, 2, 3, 4; Unicef Club 3; Mixed Chorus 1; Girls' Industrial Arts Club 2.





BABARA FROST, Drill Team 1, 2, 3, 4; Choralyres 3, 4; Orchestra 1, 2; Triple Trio 3, 4; Drama Club 1, 2, 3; Sec. 3; Bridge Club 2, 3; Jr. Prom Committee; Jr. Exec. Board; Red Cross 1, 2; SMOKE SIGNAL 1, 2, 3, 4; Spanish Club 3, 4; Student Council 1, 2, 3; Student Hostesses 3, 4.

YVONNE FROST, Choralyres 1; Mixed Chorus 4; Jazz Listening 3; Girls' Industrial Arts 3; Red Cross 1, 4.

DALE FRYER, Football 1, 2, 3, 4; capt. 4; Basketball 1, 2, 3, 4; capt. 4; Golf 1; Baseball 2; Monitor 4; Class Vice-pres. 1; Leaders Club 1, 2, 3, 4.

CATHRYN GAGNE, Choralyres 2; Jr. Choralyres 1; Trio '65 2; Art Club 1, 3; Bridge Club 1, 2, 3; Chess Club 3; Hootenanny Club 3; Knitting Club 3; Office Help 1, 2, 3; Pep Club 3; Red Cross 1; School Store 2; Typing Club 2.

RICHARD GAUDETTE, Soccer 1, 3, 4; Baseball 1, 2, 3, 4; Art Club 2, 3; Tech. Drawing Club 3, 4; Sports Car Club 4.

LAWRENCE GODFREY, Tennis 1; Electronics Club 2; Wrestling 3. MEREDITH SUSAN GOODWIN, J. V. Cheerleading 1; Art Club 1, 2, 3, 4; Bridge Club 2, 3; FALCON 3, 4; G. A. A. 2; Jr. Prom Committee; Jr. Exec. Board; Leader's Club 2; School Store 3; Student Council 2; Student Hostesses 3, 4; Sr. Exec. Board.

KENNETH GOZDOWSKI, Soccer 1; Tennis 1.

MARION A. GRANT, Drama Club 1, 2, 3; Girls' Industrial Arts 3; Hootenanny Club 3; Knitting Club 3; Pep Club 1, 2, 3; Red Cross 4.

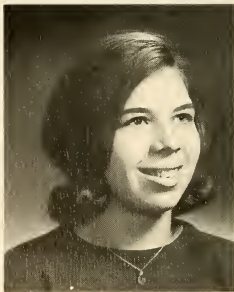
RICHARD M. GROSS, Nat. Jr. Honor Society 1; Basketball 1, 2, 3, 4; A. V. Club 2, 3; Leaders Club 3, 4; Chef's Club 4; Student Council 4; Monitor 4.

BARBARA M. HALE, Art Club 1, 2, 3, 4; FALCON 4; Girls' Industrial Arts Club 3; Hootenanny Club 3; Jr. Prom Committee; Red Cross 2, 4; School Store 2, 3; Typing Club 3; Sr. Exec. Board.

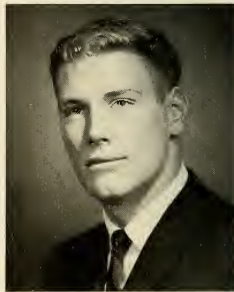
RICHARD C. HARLOW, Soccer 1, 2, 3, 4, capt. 4; Gymnastics 1, 2, 3, 4; Band 1, 2, 3, 4; Orchestra 1, 2; Swing Band 1, 2, 3, 4; Class Vice-pres. 2; Jr. Exec. Board 3; Student Council Pres. 4; Monitor 4.



BARBARA A. FROST



YVONNE LEONA FROST



DALE FRYER



CATHRYN GAGNE



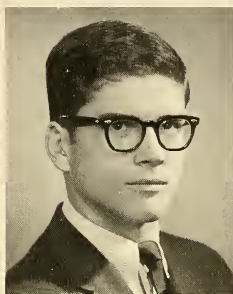
RICHARD GAUDETTE



LAWRENCE GODFREY



MEREDITH SUSAN GOODWIN



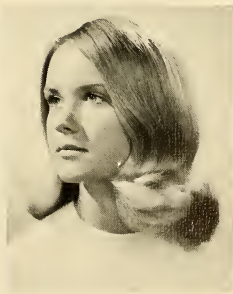
KENNETH GOZDOWSKI



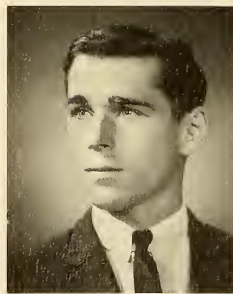
MARION A. GRANT



RICHARD M. GROSS



BARBARA M. HALE



RICHARD C. HARLOW



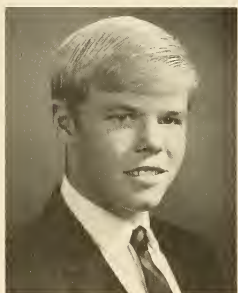
CYNTHIA B. HAYDEN



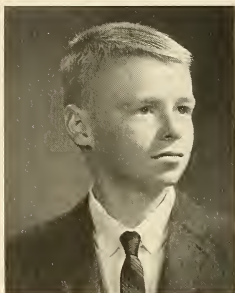
CAROL E. HAYES



GARY L. HAYES



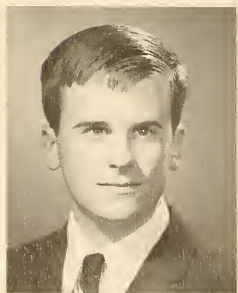
ROBERT E. HEDLUND



STEVEN HERTER



CHARLOTTE ANN HICKS



RALPH HILL



SANDRA SUE HILL



ROGER HITCHCOCK

CYNTHIA B. HAYDEN, Drill Team 4; Drama Club 2; French Club 1; Pep Club 1, 2, 3; Knitting Club 2, 3; Red Cross 1.

CAROL E. HAYES, G. A. A. 2; Drill Team 2, 3, 4; Student Hostesses 3, 4; FALCON 4; Leader's Club 2; Swim Team 1; Gymnastics 1; Field Hockey 4; Jr. Prom Committee 3; Sr. Exec. Board 4; Drama Club 3; School Store 2, 3, 4.

GARY L. HAYES, Entered 1963; Football 3, 4; Basketball 3, 4; Baseball 4; FALCON 3.

ROBERT E. HEDLUND, Swim Team 2, 3, 4; A. V. Club 1, 3, 4; Leader's Club 2.

STEVEN HERTER, Soccer 1, 2; Track 1; Tennis 2, 3, 4; Biology Club 2, 3; Camera Club 1, 2; Coin Club 2; FALCON 3, 4; Lib. Service Club 1, 2; Electronics Club 1; SMOKE SIGNAL 3, 4; Taxidermy Club 3; Wood Carving Club 2.

CHARLOTTE ANN HICKS, Entered 1964; Sewing Club 4; F. T. A. 4. RALPH HILL, Entered 1964; A. V. Club.

SANDRA SUE HILL, Jr. Choralyres 1; Choralyres 2, 3, 4; Triple Trio 2, 3, 4; Art Club 1, 2, 3, 4; French Club 1, 2; Hootenanny Club 3, 4; Nat. Honor Society 3, 4; Nat. Junior Honor Society 2; Red Cross 1, 2; Pep Club 2, 3; School Store 2, 3, 4.

ROGER HITCHCOCK, Camera Club 1, 2; Chef's Club 3; Sports Car Club 4; Wood Carving 2, 3; Baseball 1; Wrestling Club 3.

JOSEPH H. HOLTZINGER, Entered 1963; Swim Team 4.

DAVID R. HUTCHINSON, Baseball 1, 2; Basketball 1; Golf 3, 4; Soccer 3, 4; Chess Club 2, 3, 4; Journalism 4; Student Council 1, 4; Monitor 4.

GRANT M. INGLE, Soccer 2, 3, 4; Swim Team 1, 2, 3, 4; Swing Band 1, 2, 3, 4; Orchestra 1, 2; Band 1, 2, 3, 4; Camera Club 1, 2; German Club 4; Nat. Honor Society 3, 4; Nat. Junior Honor Society 1, 2; SCROLL 3, 4; Monitor 4.



JOSEPH H. HOLTZINGER



DAVID R. HUTCHINSON



GRANT M. INGLE

"I hope I can impress Maureen."



"Gee . . . Gary's super."



CAROLYN ADELLE IWASINSKI



SANDRA JENKINS



KAREN L. JODOIN

CAROLYN ADELLE IWASINSKI, Drama Club 1, 3, 4, Pres. 2; Jr. Prom Committee 3; All-State 3; Chanteuses 1, 2; Choralyres 1; Mixed Chorus 1; Rec. Chorus 3; W. Mass. District Concert 2, 3; W. Mass. Chorus 2, 3; Trio '65 2, 3, 4; Music Award 2, 3.

SANDRA JENKINS, Cheerleading 1, 2, 3, 4; Chanteuses 1, 2; Choralyres 2, 3, 4; Jr. Choralyres 1; Mixed Chorus 1; Rec. Chorus 2, 3; Trio '65 2, 3, 4; Drama Club 1, 2, 3; F. T. A. 2; Jr. Prom Committee 3; Leader's Club 2; Pep Club 2, 3, 4; Quill & Scroll 3, 4; SCROLL 3, Ed. 4; Acting Award 2; English Award 3; Principal's Award 3.

KAREN L. JODOIN, J. V. Cheerleading 1; Art Club 1, 2, 3, 4; Bridge Club 2, 3, 4; Girls' Industrial Arts Club 3; Hootenanny Club 3; Knitting Club 3; Typing Club 3.

DIANA L. JONES, Entering 1963; Knitting Club 3; Office Help 4; Red Cross 3.

GLORIA MARY JORDAN, Cheerleading 2, 3, 4; Chanteuses 2; Choralyres 1; Rec. Chorus 3, 4; Trio '65 2, 3, 4; Biology Club 2; Drama Club 1, 2; FALCON 4; Jr. Prom Committee 3; Lib. Service Club 1, 2; Nat. Jr. Honor Society 2; Pep Club 2, 3, 4; SMOKE SIGNAL 1, 2; Spanish Club 3; Student Council 2; Student Hostesses 3, 4; Leader's Club 2; Home Ec. Award 1; Lib. Science Award 1.

DAVID JOYCE, Art Club 3; FALCON 4; Hootenanny 4; Lib. Service Club 3, 4; Pep Club 2, 3; School Store 3; Typing Club 3; Hist. Arts Club 3; Mixed Chorus 2; Drama Club 2.

CLARE ANN KEEFE, Entering 1963; Art Club 3, 4; Hootenanny Club 3, 4; Art Discussion Club 4; Knitting Club 3.

PATRICIA ANN KENDREW, Chanteuses 2, 4; Choralyres 2, 3, 4; Jr. Choralyres 1; Triple Trio 2, 3, 4; Biology Club 2; Drama Club 1, 2, 3; French Club 1, 2, 3; F. T. A. 2; Hootenanny Club 3; Journalism 2; Pep Club 2; Quill & Scroll 4; Red Cross 1; SMOKE SIGNAL 2, 3, Ed. in Chief 4; School Store 3; Student Council 3; Student Hostesses 4; Senior Exec. Board 4.

DARLENE DERR, Bonnie Lassies 2, 3; Mixed Chorus 2; Art Club 1, 2, 3; Chess Club 3; Drama Club 2; FALCON 4; G. A. A. 2; Leader's Club 2; Lib. Service Club 4; Office Help 2, 4; Red Cross 2, 3, 4; Gymnastics 1, 2, 3.

ALAN R. KODIS, Swimming 1, 2, 3, 4; Track 1, 2, 3, 4; Football 1, 2; Jr. Exec. Board 3; Leader's Club 2, 3, 4; Student Council 3.

CHRISTINE KOZYRA, French Club 1; Nat. Jr. Honor Society 1; SMOKE SIGNAL 4; Typing Club 2.

GEORGE R. KROHNE, JR., Art Club 1; Chess Club 1, 2, 3, 4; FALCON 3, 4; Ham Radio 3; Journalism 2; SMOKE SIGNAL 3, 4; Electronic Club 3; Drama Club 1, 2, 3, 4; Swimming 2.



DIANA L. JONES



GLORIA MARY JORDAN



DAVID JOYCE



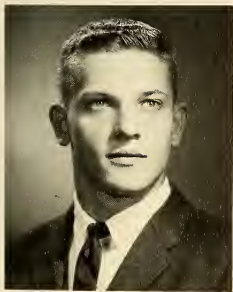
CLARE ANN KEEFE



PATRICIA ANN KENDREW



DARLENE KERR



ALAN R. KODIS



CHRISTINE KOZYRA



GEORGE R. KROHNE, JR.



JOANNE LA FAVE



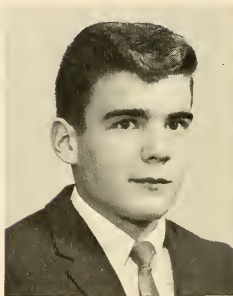
DIANNE LA MONTAGNE



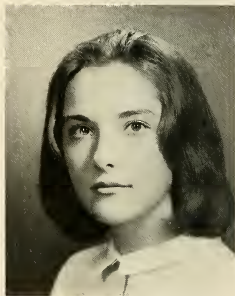
BARBARA LANDON



MARGARET JEANNE LAW



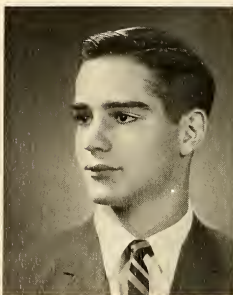
FRED LEARY



DORIS JEAN LED DUKE



LAUREL K. LINDSAY



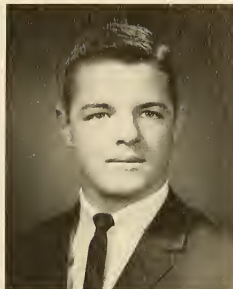
ROBERT LINSOTT



ADRIANNE ELAINE LIOCE



RICHARD LOCKWOOD



ROBERT S. LOVELL



DAVE LOW

JOANNE LA FAVE, Drill Team 4; Synco 1; Drama Club 1,2; Girls' Industrial Arts Club 3; Library Service Club 4; Pep Club 2,3,4. DIANNE LAMONTAGNE, Hootenanny 3; Knitting Club 1,2; Library Service Club 2; Pep Club 1,4; Red Cross 1,2; Art Club 1,2.

BARBARA LONDON, Jr. Choralyres 1,2; Drama Club 1,2,3; Bridge Club 1,2,3,4; F.T.A. 2,3; Hootenanny Club 3; Knitting Club 4; Library Service Club 3,4; Stagecraft 4; Cryptology 4.

MARGARET JEANNE LAW, Band 1,2; Orchestra 1; Swim Team 1,2,3,4; Pep Club 2; French Club 2; Drama Club 2; Knitting Club 2,3; Hootenanny Club 3.

FRED LEARY, Football 1,2; Track 3,4; Chef's Club 3.

DORIS JEAN LED DUKE, Cheerleading 1,2,3,4, capt. 4; Choralyres 2,3,4; Jr. Choralyres 1; Triple Trio 2,3,4; Drama Club 3; FALCON 4; Jr. Prom Committee; Jr. Exec Board; Office Help 4; Pep Club 2,3,4; Student Council 3,4; Student Hostesses 3,4; Sr. Exec. Board 4.

LAUREL K. LINDSAY, Field Hockey 4; Swim Team 1,2; Art Club 1,2,3,4; Creative Writing 3; Drama Club 1,2,3,4; Leaders Club 1,2; SMOKE SIGNAL 1; Taxidermy Club 3.

ROBERT LINSKOTT, Soccer 3; Golf 3,4; Chess 3.

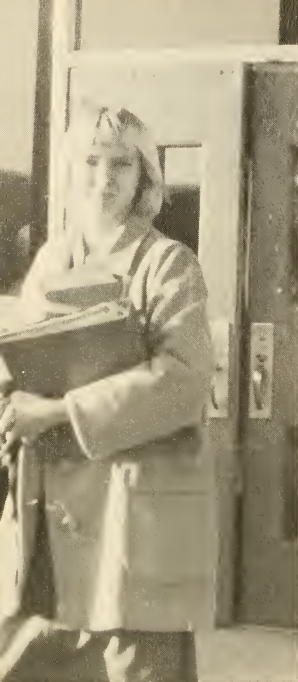
ADRIANNE ELAINE LIOCE, Entered '63; Choralyres 4; Art Club 3,4; Hootenanny Club 3,4; Unicef Club 3; Historical Art Club 3; Basketball 3,4.

RICHARD LOCKWOOD, Tennis 1,2,3,4; Student Council 2,3,4, Treas. 4; Monitor 4; Historical Issues 3; Mass. Politics 3; International Relations 4; Nat. Jr. Honor Society 3; FALCON 3,4; SCROLL 4.

ROBERT S. LOVELL, Bridge Club 1,2,3,4; Chess Club 1,2,4; Leaders Club 4; Monitor 4; Football 2,3,4; Track 1,2,3,4, capt. 4; Electronics Club 1,2; Wrestling 3.

DAVE LOW, Band 1,2,3,4; Concert Band 1,2,3,4; Orchestra 1,2,3,4; Swing Band 1,2,3,4; Western Mass. 3; FALCON 3; Hootenanny 3,4; Historical Issues 1; Jazz Listening Club 3.





LAURIE MacKAY, Swim Team 1,2,3, Co-Capt. 4; Synco 3,4; Hootenanny Club 3; G. A. A. 1,2; Leader's Club 4; Pep Club 3; Student Hostesses 4.

LYNN MAUS, Entered 1964; French Club 4; F. T. A. 4.

ALAN C. McDONALD, Drama Club 1; Whittling Club 1; A. V. Club 1; Chef's Club 4.

NANCY MEACHAM, Gymnastics 2,3; Bonnie Lassies 3; Choralyres 4; Art Club 1,2,3,4; Home Nursing Club 3; Pep Club 1,2,3; Red Cross 4; Wood Carving 1.

ARTHUR J. MENARD, A. V. Club 1,2,3,4; Camera Club 2,3; Leader's Club 3,4; Wrestling Club 3; Monitor 4.

SUSAN MENARD, Biology Club 2; Home Nursing Club 3; Jr. Prom Committee 3; Jr. Exec. Board 3; Nat. Junior Honor Society 1,2; Pep Club 2,3,4; Student Hostesses 4; Unicef Club 3,4.

DONNA MILLER, Entered 1964; Red Cross 4; Stagecraft 4.

DAVID MINOR, Gymnastics 1; Football 2,3; Bridge Club 1,2,3,4.

ROBERT E. MINOR, Cross-Country 2,3, Co-Capt. 4; Golf 1; Gymnastics 1; Track 2,3,4; Chess Club 1,2; Wood Carving 3; Wrestling Club 3; Monitor 4.

CANDIS A. MIREAULT, Bonnie Lassies 2,3; Choralyres 2,3,4; Jr. Choralyres 1; Trio '65 2,3,4; Western Mass. Chorus 3; Western Mass. District Chorus 3; Drama Club 1,2,3; Hootenanny Club 3; Pep Club 2,3; Red Cross 4.

JAMES MOCCIO, Baseball 2; Golf 1; Soccer 2,3,4; Art Club 3; Drama Club 2; Pep Club 2; Wrestling Club 3; Wood Carving 2; Chef's Club 4.

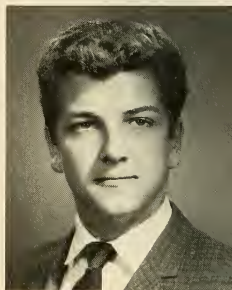
RICHARD E. MOYNAHAN, Entered 1964; Swim Team 4; Tennis 4.



LAURIE MacKAY



LYNN MAUS



ALAN C. McDONALD



NANCY MEACHAM



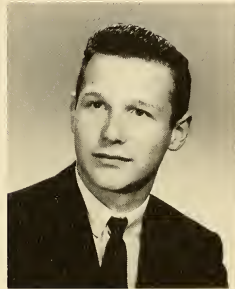
ARTHUR J. MENARD



SUSAN MENARD



DONNA MILLER



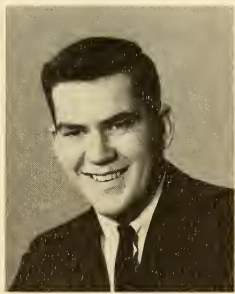
DAVID MINOR



ROBERT E. MINOR



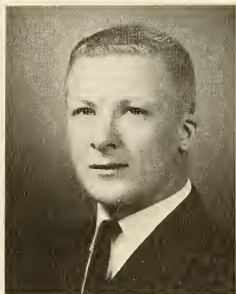
CANDIS A. MIREAULT



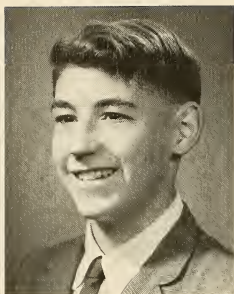
JAMES MOCCIO



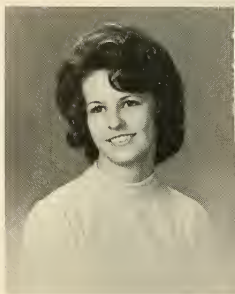
RICHARD E. MOYNAHAN



WESLEY MUELLER



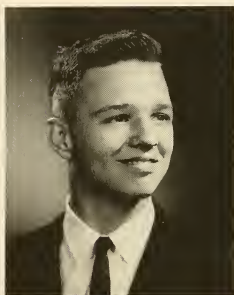
ALEXANDER MURPHY, JR.



BARBARA MURPHY



ASTRID MARIE NAKASHIAN



RUSSELL J. NEWSOME



NOREEN LOUISE NOBBS



J. BRADLEY NOWELL



PATRICIA O'NEIL



THOMAS J. O'NEIL

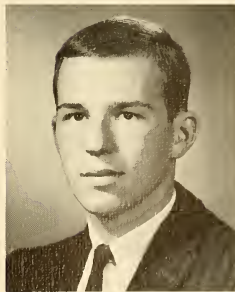
WESLEY MUELLER, Tennis 1, 2, 3, 4; Leader's Club 3; Chess Club 3; A. V. Club 1; Taxidermy Club 2; Woodcarving 1, 2; Class vice-pres. 4.
 ALEXANDER MURPHY, JR., Cross-Country 1, 2, 3, 4; Tennis 4; Chess Club 2, 3, 4; Taxidermy Club 3, 4; Woodcarving 2; Bridge 4.
 BARBARA MURPHY, Red Cross 3, 4; Typing Club 3.
 ASTRID MARIE NAKASHIAN, Field Hockey 2, 3, 4, co-capt. 4; Gymnastics 1, 2, 3, 4; Art Club 3; Bridge Club 2; FALCON 2, 4; G. A. A. 1; Jr. Prom Committee; Nat. Jr. Honor Society 1; Student Council 1, 2, 3; Student Hostesses 3, 4; Monitor 4; Leader's Club 3.
 RUSSELL J. NEWSOME, Gymnastics 1, 2, 3; Tennis 1, 2, 3, 4; Marching Band 1, 2, 3, 4, pres. 4; Orchestra 2; Swing Band 3, 4; Chef's Club 3; Debate 4; International Relations Club, pres. 4; Leader's Club 3; Spanish Club 4; Student Council 2, 3, 4, vice-pres. 4; Monitor 4; Office Help 4.
 NOREEN LOUISE NOBBS, Jr. Prom Committee, Library Service Club 2, 3, 4; Pep Club 2, 3, 4; Sewing Club 4; School Store 2; Unicef Club 3.
 J. BRADLEY NOWELL, Golf 2, 3; Chess Club 1, 2, 3, 4.
 PATRICIA O'NEIL, Jr. Choralyres 2; Bridge Club 3, 4; Hootenanny Club 3; Jr. Prom Committee, Library Service Club 2, 3, 4; Pep Club 2, 3, 4; SMOKE SIGNAL 3, 4; Stagecraft 4; Student Hostesses 2, 3, 4; Typing Club 3.
 THOMAS J. O'NEIL, Tennis 2, 3; Chess Club 1, 4; Drama Club 1, 2; Math Club 4; Electronics Club 1, 2; Nat. Honor Society 3, 4; Slide Rule Club 3; Student Council 1, 2.
 THERESA OUIMET, Field Hockey 4; Clarinet Quintet 3; Band 1, 2, 3; Western Mass. District concert 2; Art Club 2, 3; Jr. Prom Committee; Knitting Club 3; Library Service Club 1, 2.
 ROBERT PABIS, Soccer 2, 3, 4; Swim Team 4; Track 1; Golf 2, 3, 4; Swing Band 1, 2, 3, 4; Orchestra 1, 2; Camera Club 2; Band 1, 2, 3, 4.
 JONATHAN PAYNE, Mens' Glee Club 1, 2; Western Mass. Concert 1, 4; Art Club 1, 2, 3, 4; A. V. Club 1, 2; Drama Club 1, 2, 3; Library Service Club 1, 2; Woodcarving 1, 2.



THERESA OUIMET

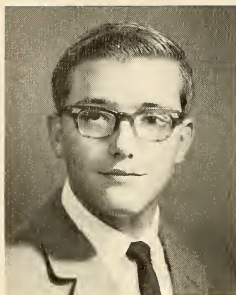


ROBERT PABIS



JONATHAN PAYNE





RONALD O. PEDERZANI



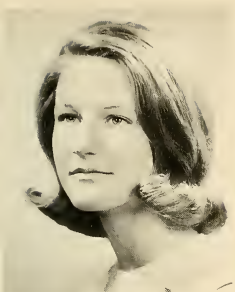
PATRICIA ANN PETERSON



JEANNE PICARD



RONALD O. PEDERZANI, Swim Team 1, 2; J. V. Baseball 1, 2.
 PATRICIA ANN PETERSON, Jr. Choralyres 1, 2; Pep Club 3, 4; SMOKE SIGNAL 3, 4; Business Award 3; NOMA Arithmetic Award 3.
 JEANNE PICARD, Entered 1962; F. T. A. Club 2, 3, Pres. 4; Hootenanny Club 3; Knitting Club 2; Lib. Service Club 2, 3, 4; Nat. Honor Society 3, 4; Pep Club 4; Red Cross 2, 3.
 CAROL PLUMB, Cheerleading 1, 2; Choralyres 2, 3, 4; Jr. Choralyres 1; Triple Trio 2, 3, 4; Pep Club 2; Student Hostesses 4.
 SUSAN POST, Drill Team 1; Mixed Chorus 2; Art Club 1, 2, 3; Bridge Club 4; Drama Club 3; Girls' Industrial Arts Club 3.
 JOYCE ELLEN PRAY, Class Secretary 1, 2; F. T. A. 2; Hootenanny Club 4; Jr. Prom Committee 3; Leader's Club 3; Lib. Service Club 2; Pep Club 1, 2; Sewing Club 4.
 ALICE PYZOCHA, Band 1, 2, Librarian 3, 4; Orchestra 1, Librarian 2, 3, 4; Woodwind Quintet 2; Jr. Prom Committee 3; Lib. Service Club 2, 3, 4; Pep Club 2, 4; SMOKE SIGNAL 3, 4; Unicef Club 2, 3, 4; F. T. A. Club 3; J. V. Cheerleading 2, 3; NOMA Math Award 3; Typing Award 2.
 LORING K. REED, Cross-Country 2; Swim Team 1, 2, 3, Capt. 4; Track 1, 2, 3, 4; A. V. Club 1.
 DIANE RICHARDSON, Bridge Club 2, 3; Drama Club 1, 2, 3; FALCON 2, 3, 4; F. T. A. Club 1, 2, Sec. -Treas. 3, 4; Hootenanny Club 3; Journalism 2; Jr. Prom Committee 3; Pep Club 2, 3, 4; Red Cross 1.
 WILLIAM R. RICHMOND, III, Cross-Country 1, 2, Capt. 3, 4; Swim Team 1, 2, 3, 4; A. V. Club 1; Nat. Honor Society 3, 4; Nat. Junior Honor Society 2; Whittling Club 1, 2.
 SCOTT ROBISON, Cross-Country 3, 4; Track 2, 3; Brass Choir 1, 2, 3; Band 1, 2, 3; Orchestra 1, 2, 3, 4; Swing Band 1, 2, 3; A. V. Club 2; Jr. Prom Committee 3; Whittling Club 1.
 PATRICK ROSSALL, Entered 1963; Track 3; Clarinet Choir 3; Band 3, 4; Orchestra 3; Swing Band 3, 4; Chef's Club 4; Jr. Prom Committee 3; Mass. Politics Club 3; Pep Club 3.



CAROL PLUMB



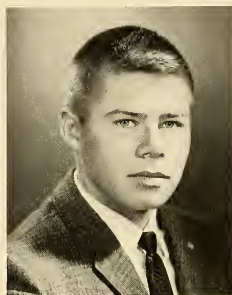
SUSAN POST



JOYCE ELLEN PRAY



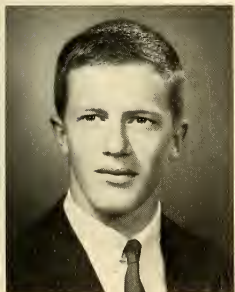
ALICE PYZOCHA



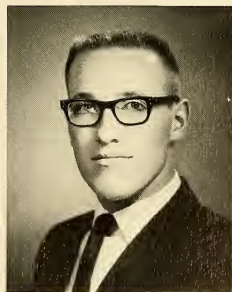
LORING K. REED



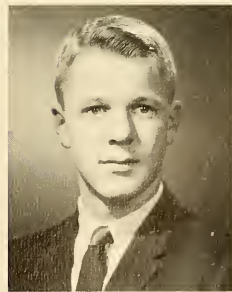
DIANE RICHARDSON



WILLIAM R. RICHMOND, III



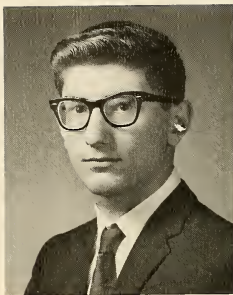
SCOTT ROBISON



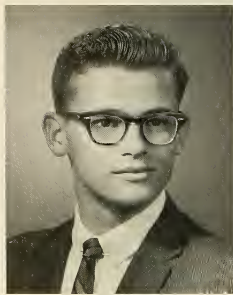
PATRICK ROSSALL



DONNA JEAN ROY



KENNETH SANTUCCI



PETER SCHONBACK



BRUCE ALAN SCHULZE



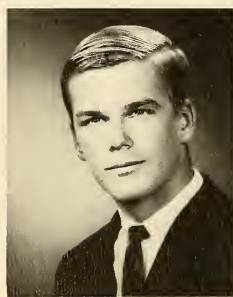
MAUREEN R. SCOTT



CYNTHIA M. SERAFINO



LAURIE J. SHANNIS



RAYMOND SHANNIS



CAROLYN LOUISE SHARPE



RICHARD SHULTS



RAYMOND SIDELEAU



JOYCE L. SIMONOKO

DONNA JEAN ROY, Field Hockey 4; Marching Band 2; Orchestra 1; Knitting Club 3; Pep Club 2.

KENNETH SANTUCCI, Football 1,2, manager 3,4; Chess Club 1, 2, 3; Baseball 1; Electronics 1.

PETER SCHONBACK, Baseball 1, 2; Basketball 1, 2.

BRUCE ALAN SCHULZE, Entered 1964; Boating Club 4; Chef's Club 4.

MAUREEN R. SCOTT, Cheerleading 2; Field Hockey 4; Swim Team 3, 4, capt. 3; Art Club 1, 2, 3, 4; Class vice-pres. 3; FALCON 3, 4; Girls' Industrial Arts Club 3; Hootenanny 3; Jr. Prom Committee; Knitting Club 3; Pep Club 1, 2; Red Cross 1, 4; Student Council Sec. 4.

CYNTHIA M. SERAFINO, Entered 1963, Gymnastics 4; Knitting Club 3; Pep Club 4.

LAURIE J. SHANNIS, Basketball 3, 4; Drill Team 3, 4; Field Hockey 3, 4; Gymnastics 3, 4; Choralyres 4; Bridge Club 1; Class Sec. 3, 4; Drama Club 1; FALCON 4; C. A. A. 2; Jr. Prom Committee; Leader's Club 2, 3, 4; Nat. Honor Society 3, 4; Pep Club 2; Student Council 1; Student Hostesses 3, 4; Monitor 4.

RAYMOND SHANNIS, Football 1, 2, 3, 4; Basketball 1, 2; Track 1, 2; Monitor 4.

CAROLYN LOUISE SHARPE, Swim Team 2, 3; Mixed Chorus 1; Student Hostesses 3, 4; FALCON 4; Pep Club 1, 2; Sr. Exec. Board; Art Club 1, 2, 3, 4.

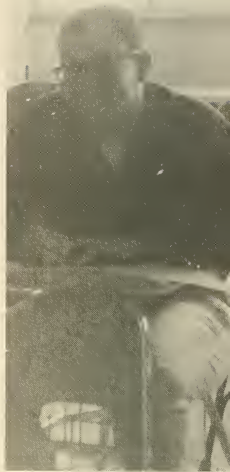
RICHARD SHULTS, Entered 1964.

RAYMOND SIDELEAU, Basketball 1, 2, 3; Baseball 1, 2; Football 1, 2; Leader's Club 2; Sports Car Club 4.

JOYCE L. SIMONOKO, Mixed Chorus 1; Home Nursing Club 3; Pep Club 3, 4; School Store 3.



JEAN ANNE SIMPSON, Entered 1963; Biology Club 3; Stagecraft 4.
 HELEN SKORUPSKI, Mixed Chorus 1; FALCON 4; Office Help 3; Pep Club 2, 3; Student Hostesses 4; Sr. Exec. Board 4.
 MAUREEN C. SMITH, Jr. Prom Committee 3; Knitting Club 3; Pep Club 2, 3, 4; SMOKE SIGNAL 3, 4; Student Hostesses 2, 3, 4; Sr. Exec. Board 4.
 CHERYL SOVEROW, Swim Team 2; Synco 1, 2, 4; FALCON 4; French Club 1; Jr. Prom Committee 3; Jr. Exec. Board 3; Nat. Junior Honor Society 1, 2; Pep Club 2; Student Hostesses 3, 4.
 DAN STARCZEWSKI, Football 3; Bridge Club 4; Sports Car Club 4; Taxidermy Club 2; Electronics Club 2; Wrestling Club 3; Monitor 4; Track 2, 3, 4.
 LYNDIA C. STEVENS, Drill Team 2, 3, Capt. 4; Field Hockey 3, 4; Swim Team 1; Gymnastics 1, 2, 3, 4; Basketball 3, 4; Mixed Chorus 1; Pep Club 2; Art Club 1, 2, 4; Bridge Club 3; Jr. Prom Committee 3; Nat. Junior Honor Society 2; Nat. Honor Society 3, 4; Leader's Club 3, 4; Student Council 2, 4; Student Hostesses 3, 4; Sr. Exec. Board 4.
 STEPHANIE STEWART, Entered 1963; J. V. Cheerleading 3; Art Club 3, 4; French Club Treas. 4; Spanish Club 3; Swim Team Co-Capt. 4; Nat. Honor Society 3, 4; Pep Club 3; Student Hostesses 3, 4.
 ELIZABETH J. STRYCHARZ, J. V. Cheerleading 1, 2; Gymnastics 3, 4; Art Club 2, 4; Jr. Prom Committee 3; Knitting Club 2; Pep Club 2; Red Cross 3, 4; Student Council 4.
 STEVEN SULLIVAN, Soccer 1, 2, 3, 4; Gymnastics 1, 2, 3, 4; Baseball 2, 3, 4; Men's Glee Club 1.
 JANET R. SWALLOW, Basketball 3, 4; Field Hockey 3, 4; Swim Team 1; Art Club 1, 2, 3; Jr. Prom Committee 3; Leader's Club 4; Lib. Service Club 1, 3, 4; Pep Club 2; Reading Club 1.
 DOUGLAS C. SWARTZ, Entered 1963; Football manager 4; Math Club 3; Nat. Honor Society 3, 4; Slide Rule Club 3; Mathlete 4.
 LAWRENCE R. SWETLAND, Baseball 1; Football 1, 2, 3, 4; Track 2, 3; Band 1; Class Pres. 3; FALCON 4; French Club 1, 2; Historical Issues Club 3; Jr. Prom Committee 3; Jr. Exec. Board 3; Leader's Club 2, 3, 4; Electronics Club 2; Nat. Junior Honor Society 1, 2; Nat. Honor Society 3, 4; Slide Rule Club 3; Student Council 1; Taxidermy Club 2; Wrestling Club 3; Monitor 4.



JEAN ANNE SIMPSON



HELEN SKORUPSKI



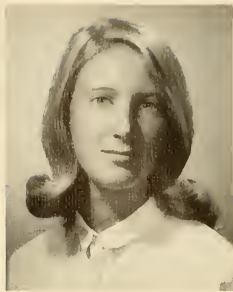
MAUREEN C. SMITH



CHERYL SOVEROW



DAN STARCZEWSKI



LYNDA C. STEVENS



STEPHANIE STEWART



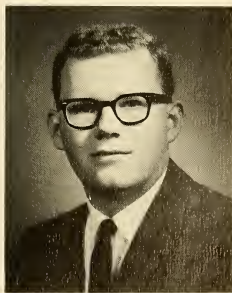
ELIZABETH J. STRYCHARZ



STEVEN SULLIVAN



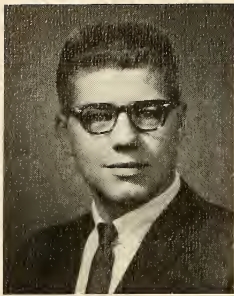
JANET R. SWALLOW



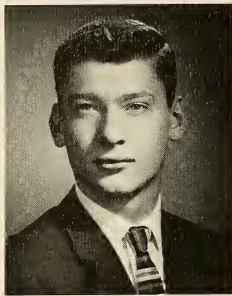
DOUGLAS C. SWARTZ



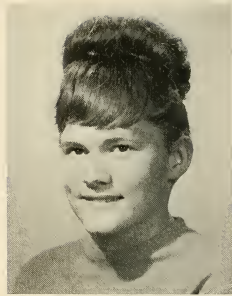
LAWRENCE R. SWETLAND



RICHARD TALBOT



DAVID K. THOMPSON



LESLIE F. THOMPSON



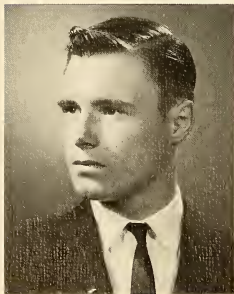
PATRICIA THURLOW



DAYLE ANN TRIPP



LUCILLE TROMBLEY



REJEAN VAILLANCOURT



CHRISTINE WELCH



LINDA I. WHITE

RICHARD TALBOT, Gymnastics manager 2; Soccer 2; Tennis 2; Biology Club 2; Camera Club 2; Chef's Club 4; F. T. A. Club 2; Leader's Club 2, 4; Student Council 2; Wood Carving 2, 3.

DAVID K. THOMPSON, Entered 1964; Men's Glee Club 4; Nat. Honor Society 4.

LESLIE F. THOMPSON, Field Hockey 3, 4; Basketball 3, 4; Mixed Chorus 1; FALCON 3; Leader's Club 3, 4; Lib. Service Club 1; Nat. Honor Society 3, 4; Pep Club 2; Student Hostesses 4; Jr. Prom Committee 3.

PATRICIA THURLOW, Cheerleading 3, 4; Mixed Chorus 1; Girls' Industrial Arts Club 3; Hootenanny Club 3; Jr. Prom Committee 3; Lib. Service Club 1; Pep Club 2, 3, 4; Reading Club 1.

DALYE ANN TRIPP, Field Hockey 4; Mixed Chorus 1; Art Club 2, 3; Hootenanny Club 3; Knitting Club 2; Leader's Club 1, 2; Office Help 2, 3; Pep Club 2; Student Council 1, 3, 4.

LUCILLE TROMBLEY, Field Hockey 3; Gymnastics 2, 3, 4; Swim Team 3; Bridge Club 3, 4; Pep Club 2, 3; Red Cross 3.

REJEAN VAILLANCOURT, Entered 1962; A. V. Club 2, 3; Chess Club 2, 3, 4; Wood Carving 2, 3; Wrestling Club 3, 4.

CHRISTINE WELCH, Entered 1963.

LINDA I. WHITE, Art Award 3; Drill Team 4; Art Club 1, 2, 3, 4; Pep Club 2, 3, 4; Bridge Club 4; Knitting Club 3; Nat. Junior Honor Society 1; SCROLL 4; Chess Club 4; Sewing Club 4; Drama Club 4; Stagecraft 4; Wood Sculpture 4; Gymnastics 4.

CYNTHIA WILLCUTT, J. V. Cheerleading 1, 2; Drama Club 3; G. A. A. 1; Jr. Exec. Board 3; Leader's Club 2; Office Help 4; Pep Club 2; Student Council 3; Student Hostesses 3, 4.

MARK WINETROUT, Class Pres. 1; Soccer 1, 2, 3, 4; Swimming 1, 2; Track 1; Tennis 2, 3, 4; Slide Rule Club 3; Leader's Club 1, 2, 3, 4; Student Council 4; Monitor 4.

CAROLE A. WOODS, Gymnastics 1, 2, 3, 4; Swim Team 1; Jr. Choralyres 1, 2; Mixed Chorus 1; Bridge Club 3; Chess Club 3; Drama Club 1, 2, 3, 4; Hootenanny 4; Knitting Club 3; Leader's Club 2; Pep Club 2; Stagecraft 4.



CYNTHIA WILLCUTT



MARK WINETROUT



CAROLE A. WOODS





VIRGINIA M. YENIAN

VIRGINIA M. YENIAN, Entered 1962, Knitting Club 2,3; Library Service Club 3; Office Help 3; Pep Club 2,3; Red Cross 4; Typing Club 3.

Other members of the class of '65:

ROBERT FANCY
JUDITH FOSTER
MICHAEL QUINN
DONALD ELDREDGE



Underclassmen

Juniors



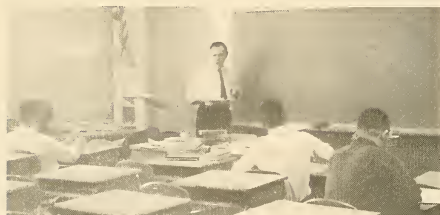
STANDING: R. Thompson, Pres. ; A. Peterson, Treas. ; J. Danforth, V. Pres. ; C. Newhouse, Sec.

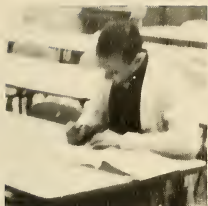
The Junior class is hard working and lively. They have contributed greatly to teams and activities and are enthusiastic in all that they attempt.

This year they received their class rings and climaxed their third successful year with the Junior Prom.



FIRST ROW: K. Misiaszek, E. Wahlberg, J. Vande Water, E. Waughtel, D. Szczebak, D. Wade, D. Alberici, F. Weidman. SECOND ROW: C. Goodrich, L. Merrill, E. Agard, M. Worthing, R. Ashe, N. Needham, N. Richter. THIRD ROW: R. Talbot, J. Shaughnessy, S. Rollins, G. Olmstead, T. DeMarco, D. Beach, C. Randall, S. Inkellis, R. Keddy, K. Quilty, M. Korhonen. MISSING: B. Barna, B. Fish, B. Garrow, J. Kimmer, A. Righi, B. Hill.





FIRST ROW: L. Sabbides, N. Theberge, D. Zimmer, E. Worthing, A. Peterson, C. Newhouse, J. Collins, P. Prochnaw, J. Godfrey. SECOND ROW: R. Dulude, T. Ensign, R. Montgomery, G. Levakis, P. Shea, E. Diaz, B. Candage, R. Dibble, D. Brown. THIRD ROW: T. Polys, P. Barry, E. P. Allard, R. Roy, L. MacIntire, D. Bump, D. Mitchell, J. Danforth. MISSING: D. Harris, F. Koser, D. Putnam, S. Sullivan, W. Wilms, R. Alarie, J. Berggren, W. Bierowka, C. Knowlton, C. Bolek, M. Brown, R. Cloutier, V. Daniels.





FIRST ROW: D. Hudon, A. Palmer, D. Erb, S. Squire, P. Sevey, J. Scott, D. Jeffers, E. Dunn. SECOND ROW: C. Fraser, B. Brown, M. Malachowski, S. Thibeault, M. Johndrow, F. Gilson, A. Fortune, F. Foster. THIRD ROW: R. Thompson, R. Lewenczuk, M. Opalinski, J. Penso, P. Conlon, M. Finn, G. Johnson, J. La Valley, D. Kaynor, J. Hurd. MISSING: D. Arnold, D. Bergeron, D. Budlong, J. Dearbon, R. Gouvin, C. Lattrell, R. Paulk, L. Plate, J. Twitchell.





FIRST ROW: G. Whitcomb, K. Tupper, D. Miller, M. Kolbusz, L. Bump, M. Oaks, J. Moffatt, C. Johnson. SECOND ROW: J. Bernett, D. Opalinski, E. Goss, A. Gurney, L. Jenkins, G. McCauley, D. Cleland. THIRD ROW: C. Buddington, S. Oaks, B. Kaynor, J. Turner, F. Buskley, R. Ouimette, J. Tousignant, S. Trepp. MISSING: L. Rice, K. Randall, A. Goodwin, M. Giles, E. Evans, C. Daigneault, V. Collins, R. Nadolski, S. Luzi, W. Cox, J. Corthell.



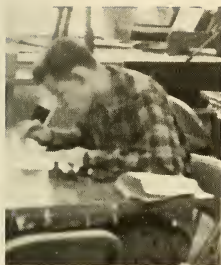


FIRST ROW: J. Duncan, C. Smith, P. Pawlak, C. Pirog, H. Sergarian, R. Green, H. Moore, R. Fairbanks, A. Motyl, I. Thomsen. SECOND ROW: S. Kielpinski, C. Wade, A. Rademaekers, M. Knight, K. Hazeltine, A. Bemben, E. Sweeny. THIRD ROW: W. Bukowski, W. Biskup, D. Picard, R. Chase, R. Paulk, R. Taft, D. Sullivan, R. Rochford, S. Lindley, J. R. Tippett, J. Giannetti. MISSING: S. Salisbury, S. Clifford.





Inger Thomsen -- Student from Denmark



Sophomores



STANDING: L. Morgan, Treas.; K. Murphy, Sec.; S. Chechile, V. Pres. SITTING: T. Campbell, Pres.

The Sophomore class this year has been very lively and enthusiastic. Their magazine campaign comprised a lot of hard work, but the class found it to be very worthwhile.

They sponsored a winter dance, the HOLIDAY INN, as the annual Sophomore Dance. The spirit of this class has enlivened Minnechaug in many activities and has proven to be an asset to our school.



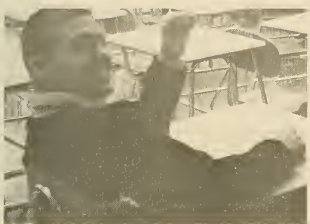
FIRST ROW: S. Bartley, N. Baker, S. Bak, B. Bearse, J. Bulter, B. Allen, S. Ballou, P. Collins. SECOND ROW: D. Adamczyk, C. Benoit, P. Boyer, K. Bocchino, M. Colton, S. Chechile, S. Benoit, C. Couture, J. Clarkson, E. Crawford, D. Burnett. THIRD ROW: L. Bean, T. Campbell, M. Balogh, J. Erower, A. Bacon, R. Binder, W. Collins, G. Lyman, B. Connelly, D. Budlong, D. Castonguay, D. Payne. MISSING: P. Bouchie.





FIRST ROW: V. Dwyer, E. Dion, T. De Marco, S. Curtis, B. Dunwoody, J. Dizer. SECOND ROW: M. Duclos, R. Dougal, R. Eldredge, J. Doubleday, R. Ertel, M. Dashnaw, D. Dickinson, J. Daniele. THIRD ROW: T. Dwyer, A. Cyr, F. Donohue, S. Fancy, J. Donleycott, W. Willms, R. Duncan, S. Deane, C. Fletcher, D. Cummings. MISSING: L. Fidgeon, L. Fairman.





FIRST ROW: D. Hedlund, M. Furgal, H. Frost, J. Glover, C. Gagne, B. Hatcher, L. Fryer, C. Jordan, E. Francisco. SECOND ROW: J. Holtzinger, E. Godfrey, T. Gill, C. Goodrich, J. Hastings, L. Johnson, A. Fongemie, T. Hitchcock, P. Fongemie, J. Hartman. THIRD ROW: R. Horacek, P. Goulding, E. Fleury, E. Hillgrove, H. Johnson, P. Hayes, L. Hartman, A. Gagne, E. Galbrath, E. Glica, D. Hellyar, J. Haggerty, D. Hicks. MISSING: E. Johnson, S. Gates, C. Gregory, K. Howard, J. Grace.





FIRST ROW: C. Masters, D. McDonald, J. King, G. Kendall, M. Meir, L. Majka, P. Lempart, D. MacIntire, E. Kinney, C. Less. SECOND ROW: D. Maloney, T. Madeira, B. La Croix, E. Lombard, J. Lovell, D. Martin, J. MacRae, C. Kibbe, P. Markham, J. Kirzec, P. Liapis. THIRD ROW: J. Madeira, D. La Montagne, D. Lopata, A. King, G. Maharne, M. Lescault, C. Kapinos, T. Led Duke, R. Laramée, R. Karczmarczyk, K. Korhonen. MISSING: C. Lyman, S. Malysz, T. Mascaro, B. Kocal.





FIRST ROW: R. Nath, L. Pauly, R. Mertz, T. Polys, V. Nay, L. Neff, L. Morris, I. Rene, O. Rathbone. SEC-
OND ROW: E. Moran, J. Richmond, P. Righi, D. Richter, G. Melanson, L. Morgan, E. Rosinski, D. Paradine,
K. Murphy, J. Reed, M. Rose. THIRD ROW: T. Mount, S. Plumb, G. Rhodes, R. Mount, S. Rogers, R. Parr,
K. Pincince, J. Paquette, D. Parker, B. Norris, P. Pelletier, R. Place, S. Richards. MISSING: V. Menard, D.
Payne, J. Pepin, S. Rogers.





FIRST ROW: S. Smith, P. Simpkins, M. Strycharz, C. Thorndike, P. Trombley, L. Theocles, J. Twomey, M. Sabbides, C. Talbot. SECOND ROW: I. Salcevic, C. Turner, A. Scott, B. Schmuck, S. Roy, M. Thompson, D. Taft, C. Welch, S. Searles, B. Roy. THIRD ROW: W. Shaw, P. Swetland, R. Tobias, E. Scott, J. Storm, C. Samble, W. True, G. Swan, D. Stephens, P. Swallow, R. Welch, D. Willis. MISSING: R. St. James, R. Vautrain, R. Welch.



Freshmen



STANDING: J. Wilkinson, Pres. ; C. Proctor, Sec. ; S. Ciecko, Treas. ; K. Twining, V. Pres.

This year's Freshman class is the largest in Minnechaug's history.

In the fall they entered bewildered, confused and with much to learn; but as the year progressed, they contributed more and more to our school. They held the traditional Hallowe'en Dance which turned out to be very successful. Throughout the year they supported and participated in our sports teams with much enthusiasm.

This first year they have learned to accept the many responsibilities that will prepare them to uphold Minnechaug's fine name.



FIRST ROW: P. Dulude, C. Bogacz, A. Beaumier, B. Ballard, S. Burt, S. Clark, R. Ashe, J. Corey, A. Dubray, P. Canney, J. Duplissa, K. Drenzek. SECOND ROW: G. Carron, P. Bennett, H. Blackman, S. Donley-cott, D. Collette, P. Cleland, A. Carlson, S. Bennett, S. Cady, S. Ciecko, C. Bergeron, N. Bruska, L. Dearborn, D. Bulger, B. Cook. THIRD ROW: D. Cunningham, R. Bonsall, C. Boyer, G. Allison, J. Addis, T. Chechile, J. Damoulakis, S. Cady, W. Crawford, D. Belle Isle, J. Bready, K. Battige, R. Clark, D. Andrusik, M. Budlong, D. Babineau. MISSING: L. Armitage, P. Drittain, S. Dane, M. Campbell.





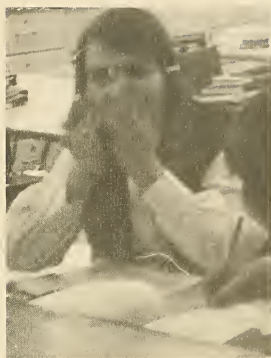
FIRST ROW: E. Gibson, N. Kendall, P. Hunde, M. Hall, J. Hayes, S. Hopkins, L. Jez, D. Frederick, L. Johnson, G. Hayden. SECOND ROW: J. Evans, H. Gouvin, C. Gill, D. Flint, E. Johnson, S. Goos, C. Hayden, B. Green, E. Giroux, C. Erb, D. Hughes, R. Hanson, J. Garneau. THIRD ROW: R. Kaynor, R. Green, P. Evans, P. Kielpinski, T. Harrison, J. Fynan, D. Hannah, G. Gould, D. Gelinas, D. Gilson, J. Jenkins, J. Hoerle, D. Hicks. MISSING: J. Goodrich, T. Gebeau, R. Gregoire, E. Kedziorek.





FIRST ROW: P. Meade, D. Kocal, E. Knowlton, A. Laurino, J. Labody, M. Kinsey, R. McDonald, G. McMillan, L. Lockwood, J. McCalliget, P. Knetz, E. Miller. SECOND ROW: D. Martin, S. Leganza, R. King, M. Linehan, Mrs. Bauer, P. Kittridge, E. Kwapisinski, G. Lemieux, R. La Porte. THIRD ROW: M. Mariani, D. Laviolette, M. Maher, C. Knode, D. LeDuc, K. Koziol, M. Meregian, R. Mahon, K. Kowynia, J. Levesque. MISSING: S. Mascaro, K. Lariviere, P. Labrie, S. La Fleche, E. Kaczynski.





FIRST ROW: A. Richmond, D. Richter, A. Riga, K. Pearson. SECOND ROW: M. Munsell, E. Opalinski, C. Proctor, M. Rives, N. Nareau, C. O'Hara, K. O'Hara, D. Roan, S. Minor, J. Paradis. THIRD ROW: E. Misiaszek, A. Motyl, S. Potter, D. Quility, K. Philibotte, L. Pellegrini, L. Nareau, J. Plumb, N. Riddle, M. Pearson, D. Prouty, L. Miller, S. Ouimet, K. Ouimet. FOURTH ROW: T. Richards, R. Paradine, J. Nickolls, G. Petzold, T. Pluta, I. Pieniak, D. Putnam, R. Plumpton, R. Moore, G. Riggs, S. Nelson, B. Pinney, P. Pedula, T. Murphy, S. Rae, R. Owen. MISSING: A. Ricci.





FIRST ROW: S. Smith, K. Twining, J. Smith, S. Salisbury, S. Waterhouse, R. Wilson, R. White, R. Weidman. SECOND ROW: M. Vande Water, L. Van Derwerken, B. Tusai, C. Sullivan, N. Sprague, K. Simpson, H. Schoolcraft, C. Rudy, L. Schaefer, Y. Trombley, S. Smith. THIRD ROW: D. Roberts, P. Tripp, J. Wade, M. Woods, B. Walch, C. Tupper, N. Stacy, L. Smith, S. Shea, P. Scott-Smith, C. Szumiell, N. Warren. FOURTH ROW: J. Sieron, D. Sterns, D. Valentine, P. Sideleau, T. Short, E. Sharpe, G. Trevallion, R. Walas, R. Skrzynarz, J. Santucci, W. Samble, J. Wilkinson, G. Swartz. MISSING: D. Yates.



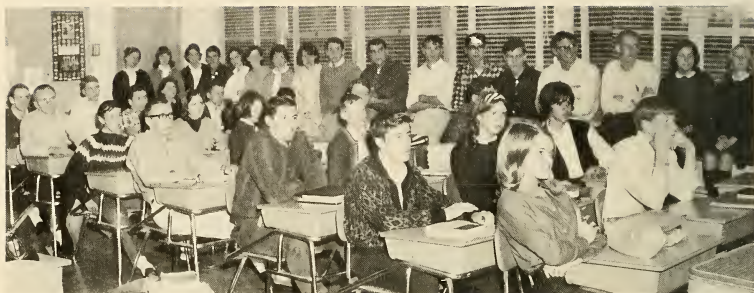




activities



Student Council



FIRST ROW: E. Moran, C. Kapinos, T. Short, J. Anderson, J. Danforth, S. Oaks, E. Strycharz. SECOND ROW: J. Wilkinson, R. Bonsall, M. Reeves, C. Erb, S. Gates, C. Fraser, S. Rollins. THIRD ROW: M. Pearson, R. Kaynor, M. Meregian, J. Corthell, M. Winetrout, S. Chechile. FOURTH ROW: H. Moore, R. Fairbanks, J. Moffatt, D. Beach, D. Led Duke, H. Frost, L. Pauly, L. Dearborn, A. Right, R. Gouvin, I. Agard, D. Stephens, T. Campbell, D. Hutchinson, R. Gross, D. Tripp, L. Stevens.

Student Council Officers



M. Scott, Secretary; R. Lockwood, Treasurer; R. Newsome, Vice-President; Mr. VanWest, Advisor; R. Harlow, President.



Student Hostesses



FIRST ROW: J. Moffatt, G. Jordan, L. Stevens, C. Hayes, E. Dunn, C. Soverow, R. Fairbanks, J. Bateson.
SECOND ROW: M. Giles, D. Erb, L. MacKay, P. Kendrew, P. O'Neil, M. Smith, S. Menard, D. LedDuke, L. Shannis, C. Bruska, C. Plumb. THIRD ROW: D. Jeffers, C. Fraser, J. Berggren, A. Peterson, C. Willcutt, V. Brooks, L. Thompson, H. Dexter, E. Agard, C. Sharpe, P. Clark, H. Skorupski, C. Wade. FOURTH ROW: D. Hudon, H. Moore, J. Scott, H. Sedarian, S. Stewart, M. Goodwin, L. Babineau, M. Scott, J. Bulger, D. Alberici, J. Dennis, R. Nakashian, K. Hazeltine, B. Frost.

Monitors



FIRST ROW: D. Hutchinson, B. Bradkie, L. Shannis, J. Dennis, H. Dexter, C. Bruska, R. Nakashian, W. Damon, R. Lovell, B. Fish. SECOND ROW: R. Gross, R. Shannis, A. Menard, L. Swetland, R. Harlow, R. Newsome, D. Fryer, M. Winetrou, R. Lockwood, G. Ingle, D. Starczewski, D. Minor.

National Honor Society



FIRST ROW: K. Misiaszek, J. Foster, J. Moffatt, A. Peterson, L. Thompson, J. Swallow, S. Hill, V. Brooks, C. Johnson, C. Bruska. SECOND ROW: T. Campbell, L. Swetland, I. Agard, W. Richmond, J. Addis, G. Ingle, D. Brown, D. Swartz, R. Dibble, W. Dougal, T. O'Neil, T. Ensign, R. Esposito. THIRD ROW: N. Carogl-anian, J. Picard, D. Hudon, C. Newhouse, L. Babineau, L. Stevens, L. Shannis, C. Bean, R. Fairbanks, E. Dunn, D. Jones, F. Foster. MISSING: J. Bulger, J. Burnett, A. Christensen, C. Hayes, C. Hicks, D. Jeffers, S. Jenkins, J. Kimmer, L. Maus, P. Rossall, R. Thompson, K. Tupper, S. Stewart.

National Honor Society Officers

FIRST ROW: L. Baineau, Vice-President; C. Bruska, Secretary. SECOND ROW: J. Addis, President; L. Swetland, Treasurer.



National Junior Honor Society



S. Curtis, G. Kendall, B. Allen, L. Pauly, M. Strycharz.

Scroll



SITTING: C. Wade, Miss Little, Advisor, G. Ingle, R. Lockwood, T. Campbell. STANDING: D. Jeffers, H. Frost, S. Jenkins, Editor-in-Chief.



SITTING: H. Skomupski, C. Soverow, C. Sharpe, D. Richardson, I. Agard, F. Gilson, K. Murphy, A. Fortune, V. Nay, M. Goodwin, D. Kerr, M. Scott, B. Hale, H. Moore, J. Scott. STANDING: E. Agard, H. Dexter, J. Bateson, G. Brooks, T. DeMarco, S. Checchile, A. Gurney, D. Alberici, C. Bruscia, D. Jeffers, G. Jordan, H. Frost, D. Joyce, L. Sweetland, L. Babineau, P. Fleming, R. Nakashian, B. Strycharz, V. Yemian, C. Hayes, S. Herter, D. LedDuke.

F
A
L
C
O
N

STAFF

EDITOR-IN-CHIEF: Charlotte Bruska.
 ASSISTANT EDITOR: Diane Jeffers.
 SECRETARY: Harriet Dexter.
 TREASURER: Diane Jeffers.
 FACULTY EDITOR: Diane Richardson; COMMITTEE:
 Nancy Caroglanian.
 SENIOR EDITOR: Lenore Babineau; COMMITTEE:
 Ree Nakashian, Pat Fleming.
 UNDERCLASSMEN EDITOR: Joanne Bateson; COM-
 MITTEE: Harriet Dexter.
 ACTIVITIES EDITOR: Gloria Jordan; COMMITTEE:
 Debbie LedDuke.
 GIRLS' SPORTS EDITOR: Ginny Brooks; COMMIT-
 TEE: Darlene Kerr, Cynthia Johnson
 BOYS' SPORTS EDITORS: Dick Lockwood and Tad
 DeMarco.
 ART EDITOR: Carol Hayes; COMMITTEE: Carolyn
 Sharpe.
 BUSINESS MANAGER: Helen Skorupski; COMMIT-
 TEE: Irv Agard, Larry Swetland, Cheryl Soverow.
 SUBSCRIPTION MANAGER: Maureen Scott, COMMIT-
 TEE: Meredith Goodwin, Laurie Shannis, Jane Scott,
 Holly Moore, Barbara Hale, Betty Strycharz, Virginia
 Yenian.
 PHOTOGRAPHY EDITOR: George Krohne; COMMIT-
 TEE: Dan Payne, Sue Chechile.
 ADVISOR: Mrs. Jean O'Neil.



Editors: J. Bateson, C. Bruska, D. Jeffers, S. Herter, L. Babineau, M. Scott, D. Richardson, G. Brooks, H. Skorupski, G. Jordan, C. Hayes.

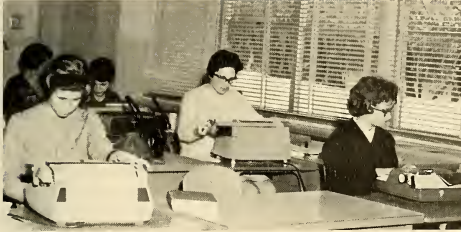
Smoke Signal



FIRST ROW: T. Campbell, C. Bean, N. Baker, H. Frost, S. Bak, B. Frost, S. Squire. SECOND ROW: S. Herter, J. Addis, D. Jeffers, J. Godfrey, P. Bernard, C. Lattrell. MISSING: J. Duncan, A. Fortune, D. Kaynor, A. Palmer, A. Rademaekers, C. Wade, P. Righi.



Editors. FIRST ROW: Miss Little, Advisor; I. Agard, J. Foster, P. Kendrew, Editor-in-chief, D. Hudon. SECOND ROW: D. Erb, S. Richards, S. Curtis.



Typists. FIRST ROW: B. Dulude, M. Smith, T. Ouimet, C. Kozyra, K. Tupper, J. Kimmer, P. Clark. SECOND ROW: N. Nobbs, A. Pyzocha, P. O'Neil, K. Bocchino, G. Whitcomb. MISSING: J. Bernet, S. Clifford, P. Peterson.

Quill and Scroll



FIRST ROW: P. Peterson, C. Kozyra, M. Scott, L. Babineau, A. Pyzocha, C. Wade, D. Jeffers. SECOND ROW: J. Bernet, K. Tupper, S. Jenkins, P. Kendrew, C. Bruska, I. Agard. MISSING: J. Foster.

Audio Visual Club

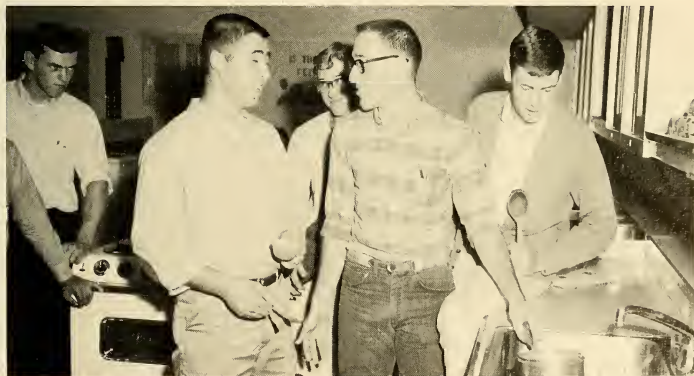


R. Fancy, R. Nadolski, S. Luzzi, D. Cummings, Mr. Kacoyannakis, Advisor, D. Dickinson, J. Corthell, L. Bean.

Chef's Club



FIRST ROW: T. Bayerle, S. Robison, R. Esposito, W. Chamberlain, SECOND ROW: K. Santucci, D. Joyce, J. Bready, J. Bernet, D. Starzewski, R. Hitchcock.



Library Service Club



FIRST ROW: L. Bean, W. Collins, P. Lempart, D. Kerr, M. Malachowski, S. Squire, V. Collins, A. Pyzocha, E. Kinney, J. Foster. SECOND ROW: F. Foster, J. Godfrey, S. Curtis, A. Bemben, M. Furgal, J. Picard, S. Bak, C. Bean, A. Fortune, B. Landon, N. Nobbs. THIRD ROW: E. Bemben, M. Korhonen, R. Ertel, B. Bearse, J. King, R. St. James, D. Richter, J. Swallow, S. Ballou, J. Francis.



Library Service Club Officers

SITTING: S. Squire, Publicity Chairman; J. Dennis, Secretary-Treasurer; S. Clarkson, Vice-President. STANDING: F. Foster, Program Chairman; J. Foster, President; A. Bemben, Display Chairman.

Pep Club



FIRST ROW: J. Hayes, S. Menard, P. Bernard, J. Picard, N. Bruska. SECOND ROW: P. Dulude, C. Jordan, L. Theocles, J. Glover, L. Fryer, L. Morgan, V. Menard. THIRD ROW: A. Sweeney, D. Cummings, D. Lamontagne.

Pep Club Officers

SITTING: J. Picard, Vice-President; M. Smith, Secretary; S. Menard, Treasurer.
STANDING: P. Bernard, President.

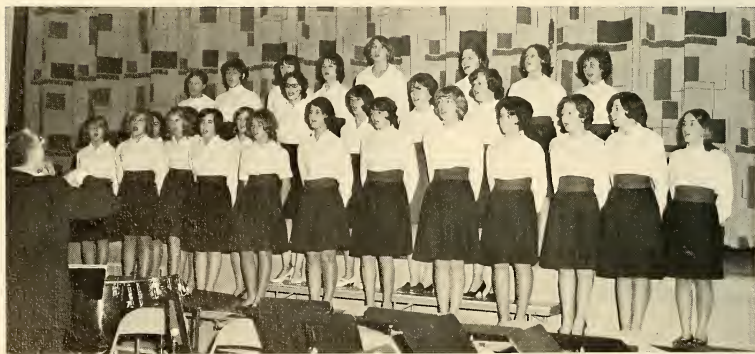


Choralyres



FIRST ROW: N. Richter, P. Prochnow, J. Godfrey, E. Bemben, A. Bemben, D. Jeffers, S. Clifford, D. Erb.
SECOND ROW: C. Wade, V. Menard, C. Lees, S. Chechile, J. Clarkson, N. Baker, K. Murphy, H. Frost, Mr. Killam, Director. THIRD ROW: W. Biskup, Accompanist; L. Shannis, Accompanist; C. Bruska, D. LedDuke, B. Frost, P. Clark, S. Hill, G. Jordan, C. Barnes, J. Bulger. FOURTH ROW: J. Duncan, C. Welch, G. Melanson, M. Strycharz, L. MajKa, T. Polys, M. Meier, E. Francisco, D. MacIntire, L. Morgan.

Junior Choralyres



FIRST ROW: J. Hayes, N. Bruska, L. Fidgeon, D. Paradise, K. LaRavier, S. Dane, B. Greene, S. Potter, S. Mascaro, N. Miller, P. Canney, M. Reeves. SECOND ROW: L. Theocles, C. Couture, M. Hall, P. Hundee, D. Bulger, L. Dearborn, R. Plumpton. THIRD ROW: D. Quilty, I. Pieniale, J. Glover, R. St. James, D. Putnam, S. Curtis, K. Ouimet.

Sophomore Triple Trio

T. Polys, S. Chechile, L. Majka, K. Murphy, G. Melanson, M. Meier. W. Biskup, Accompanist.



Junior Triple Trio

FIRST ROW: E. Goss, K. Tupper, B. Waughtel, N. Richter. SECOND ROW: C. Fraser, A. Gurney, C. Wade, C. Johnson, J. Duncan. W. Biskup, Accompanist.

Senior Ensemble



FIRST ROW: C. Barnes, S. Hill, C. Mireault, G. Jordan, B. Frost, D. LedDuke, C. Bruska. SECOND ROW: P. Clark, C. Iwasinski, S. Jenkins, J. Bulger, C. Plumb, P. Kendrew.

Men's Glee Club



D. Thompson, C. Buddington, K. Randall, G. Mahame.

Swing Band



FIRST ROW: D. Low, T. Mascaro, M. Balough, B. Pabis, D. Harlow, P. Rossall. SECOND ROW: A. Righi, P. Swetland, T. Gebo. THIRD ROW: J. Damoulakis, S. Malysz, M. Opalinski, R. Esposito.

Orchestra



Western Mass. District Chorus



FIRST ROW: C. Iwasinski, J. Bulger. SECOND ROW: C. Johnson, K. Tupper, C. Randall, P. Kendrew, J. Duncan. MISSING: C. Buddington, C. Mireault.

Western Mass. District Orchestra and Band



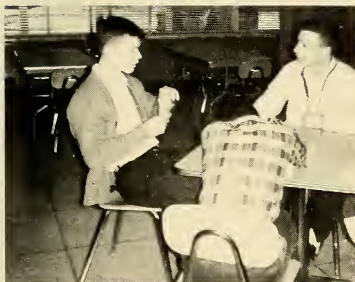
FIRST ROW: K. Pincince, B. Norris, C. Allison. SECOND ROW: D. Low, P. Rossal.

School Store



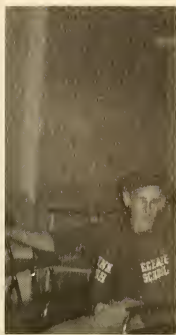
FIRST ROW: P. Sevey, J. Scott, M. Furgal, S. Hill, K. Tupper, J. Kimmer. SECOND ROW: E. Agard, E. Wahlberg.

Bridge Club



Chess Club



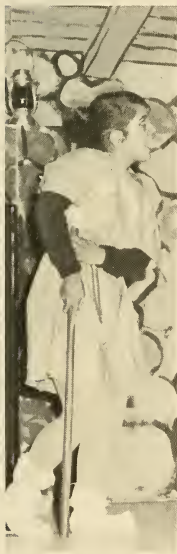


Plays



Last fall, all four classes competed in the One-Act Play Contest. The seniors presented the play "A Trap is a Small Place" (ABOVE). The junior play, "The Far Country," was chosen the best play (BOTTOM). For their outstanding performances, the Best Actress and Best Actor Awards went to Evelyn Goss and Christopher Randall respectively. "Happiness Is a Warm Blanket" was presented by the sophomores. The freshman play was "The Ugly Duckling."







athletics



Field Hockey



Co-captains



2-2 record . . . Walloped West Side! . . . okay, so MacDuffie walloped us . . . (famous last words:) "STICKS" . . . sticks again! . . . sticks again!? . . . Co-captains: Lennie and Ree . . . Go-o-o-o-o-o Minnechaug! . . . "Three cheers for Mrs. Miller!"



FIRST ROW: T. Ouimet, E. Dunn, A. Nakashian, L. Shannis, L. Stevens, L. Lindsay, M. Scott, M. Giles.
 SECOND ROW: L. Pauly, B. Allen, J. Scott, D. Szczebak, C. Bean, L. Babineau, J. Bateson, A. Sweeny, S. Benoit, L. Dearborn. THIRD ROW: G. Brooks, D. Roy, C. Hayes, J. Dearborn, H. Dexter, P. Bernard, D. Tripp, L. Thompson, J. Swallow, S. Curtis, M. Colton, D. Richter, Mrs. Miller. MISSING: J. Lovell.





FIRST ROW: P. Pawlak, P. Strychartz, N. Riddle, J. Hayes, N. Bruska, M. Hall. SECOND ROW: K. O'Hara, C. Erb, C. Newhouse, J. Lovell, L. Ness, C. O'Hara.

J.V. Cheerleaders Majorettes



S. Chechele, C. Couture,
captain, J. Gluver.

Drill Team



FIRST ROW: C. Smith, S. Minor, S. Salisbury, N. Needham, L. Bump, L. Shannis, L. Stevens, J. Wade, J. Reed, M. Johndrow. SECOND ROW: C. Gill, B. Dulude, C. Hayden, B. Brown, K. Murphy, B. Frost, L. White, N. Caroglanian, S. Bayerle, F. Weidman, M. Colton, L. Morgan. THIRD ROW: J. La Fave, M. Oaks, C. Hayes, S. Bartley, C. Frazer, G. Brooks, L. Fryer, J. Bateson, J. Clarkson, C. Wade, G. Kendall, C. Squirrel. MISSING: H. Serdarian, M. Reves.



Captain



Everybody guide RIGHT! . . . Okay, who forgot her gloves? . . . kilt pin? . . . bloomers? . . . RIGHT, stupid, that's your left! . . . Who's got the field today, Mr. Law? . . . Thanks to Mrs. Miller for being such a patient coach! . . . Team Captain: Lynda.





Cheerleaders





Captain



C. Jordan, A. Peterson, P. Thurlow, S. Jenkins, G. Jordan, D. Hedlund, D. Erb, D. LedDuke, N. Richter, H. Moore.

MINNECHAUG SPIRIT ALL SE-E-e-t? You bet! . . . Basketball season brought three new members to the cheering squad: Doug, Tom, and Alan! . . . Also, added spirit from the fans . . . Also, new "cheers" . . . This years' captain: Deb, J.V.'s captain, Carol . . . Thanks to Miss Walinski . . . again!





FIRST ROW: M. Woods, R. Nath, S. Searles, B. Roy, D. Quilty, P. Simkins, S. Smith, S. Chechele. SECOND ROW: K. Donahue, G. Lavakis, E. Diaz, J. Godfrey, L. MacKay, Mrs. Denison, S. Stuart, N. Baker, M. Law, H. Frost, C. Johnson, R. Ashe. THIRD ROW: G. Melanson, R. Green, K. Hazeltine, J. Butler, C. Hayden, D. Flint. MISSING: L. Fairman, E. Miller.

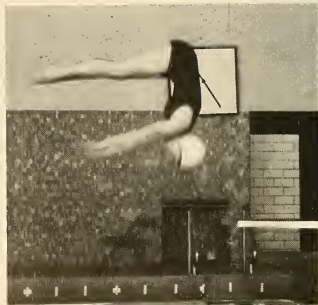
Swim Team

Swimmers take your mark! Get Set! SPLASH Go? . . . Swimmers on Mondays and Wednesdays . . . or is it Tuesdays and Thursdays? . . . Pass the apples! . . . Laurie, swimming captain; Steph, diving captain; Erin, Manager . . . Well, we're good sports, Mrs. Denison!

Swimming Captain



Diving Captain







FIRST ROW: S. Smith, T. Polys, R. Green, K. Donahue, J. Dearborn, J. Bateson, E. Miller. SECOND ROW: C. Barns (manager), J. Scott, P. Simkins, C. Bruska, J. Swallow, H. Dexter, M. Pearson, M. Giles, Mrs. Denison. MISSING: C. Bean, L. Thompson.



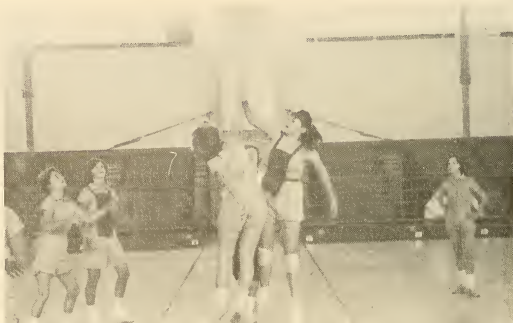
Co-captain



Co-captain

Basketball

This is a GYMNASIUM? You gotta' be kidding! . . . Only enough room for man-to-man defense . . . man-to-man playing, for that matter . . . Don't forget: "Boxes" and "Hands" . . . (Down with Ludlow!) . . . Cindy and Les, co-captains . . . Thanks to Mrs. Denison for being such a great coach and "hiking leader"!





Gymnastics



Would someone please come hold down the unevens?
 . . . Darn it, I AM pointing mytoes! . . . Can I do
 a triple WHAT? . . . Co-captains: Jane and Laurie.
 Manager: Sandy, and our wonderful coach: Mrs.
 Habig (who joined the team a little late!) . . . Also,
 special thanks to Mrs. Miller and ? !!

FIRST ROW: S. Minor, D. Roan, K. Quimet, M. Woods, L.
 Stevens, J. Twomey, C. Turner. SECOND ROW: L. Fairman, M.
 Colton, L. Pauly, C. Johnson, S. Searles, S. Roy, Y. Trombley,
 J. Wade, B. Strychartz. THIRD ROW: B. Roy, S. Benoit, P.
 Canney, G. Brooks, C. Wade, L. Shannis, N. Riddle, L. Trom-
 bley.





FIRST ROW: C. Wade, L. Fairman, C. Johnson, A. Peterson, J. Swallow, L. Stevens, L. Shannis, G. Brooks, SECOND ROW: B. Allen, L. Pauly, S. Benoit, J. Twomey, S. Searles, J. Bateson, M. Giles, L. MacKay, Mrs. Miller. MISSING: C. Bean, L. Thompson, E. Dunn.

Leaders' Corps

. . . alias "Minnechaug Maid Service" . . . Never really mastered the art of not being around when dirty towels needed to be picked up . . . Never really mastered getting the showers to be the right temperature . . . Never really mastered remembering to bring a whistle to basketball class . . . Anyway, we got those GREAT little patches for the left sleeve of our GYMSUITS! . . . Laurie -- President; Eileen -- Secretary; and thanks to our advisor, Mrs. Miller.



President



Secretary



Cross Country



FIRST ROW: L. Richmond, B. Richmond, B. Candage, L. Plate, B. Minor, J. Danforth, S. Oaks, D. Kaynor.
SECOND: B. Weidman, J. Nichols, A. Cyr, J. Holtzinger, M. Korhonen, R. Kaynor, T. Kaynor, A. K. Kowynia, A. Murphy, Coach Badger.



Minnechaug's 1964 cross-country team had a most successful season, turning in a tally of eight wins and only one loss. Under the supervision of Coach Jerry Badger, the Harriers placed third in the Western Massachusetts Regional Championships. Co-captains for the season were Larry Plate and Bob Minor who were also their outstanding runners.

Scores



FALCONS	OPPONENTS	
19.	Holyoke40
16.	W. Springfield47
42.	Tantasqua.17
16.	Southwick.45
20.	Somers41
19.	Classical.44
27.	Cathedral32
18.	Technical45
21.	Somers38

Regional Championships at U. Mass.
Minnechaug placed 3rd

(Note: In cross-country the lowest score wins)



Soccer



FIRST ROW: D. Lopata, J. Twitchell, R. Paulk, R. Thomson, R. Harlow, R. Pabis, R. Olmstead, T. Campbell, S. Sullivan. SECOND: Coach Kober, H. Armatage, J. Anderson, G. Johnson, B. Braskie, G. Ingle, R. Gaudette, J. Moccio, D. Hutchinson, M. Winetrout, D. Willis (manager).

The 1964 Minnechaug varsity soccer team, facing tough competition from the Pioneer Valley League, finished their season with a 7-8 overall record. A potentially fine team, they were hampered by injuries and inexperience due to the loss of many varsity members from the class of '64. Led by Dick Harlow, Mark Winetrout, Dave Hutchinson, Dick Gaudette, Dave Lopata, and Ron Thomson, the team, in a late season spurt, revealed some of its latent power.



Scores

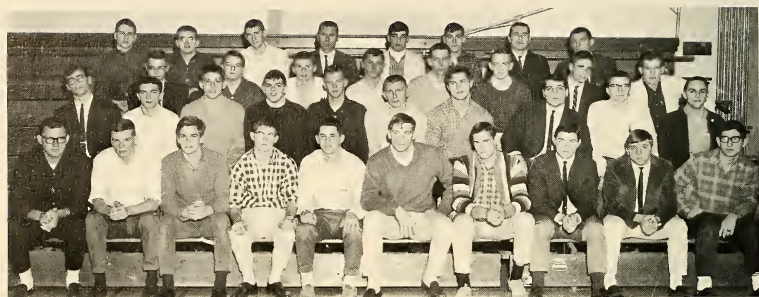


FALCONS	OPPONENTS	
0	Ludlow	7
1	E. Longmeadow	2
0	Monson	1
2	Chicopee Comp.	1
1	Longmeadow	2
0	W. Springfield	5
2	Chicopee	1
1	Ludlow	2
1	Enfield	0
0	Chicopee	1
2	E. Longmeadow	0
3	W. Springfield	2
0	Longmeadow	2
6	Monson	1
5	Chicopee Comp.	0



FIRST ROW: Kapinos, Eldridge, G. MacCauley, S. Rollins, J. Jenkins, P. Reggie, D. Gilson, S. Mouradmergian. SECOND: Samble, B. Norris, P. Madeira, J. Shaughnesy, Gouvin, T. Short, M. Opalinski, J. Brower, E. Papisinski. THIRD: M. Rose, D. Opalinski, R. Roy, Owens, B. Fish, Richards, S. Salisbury, Coach De Wolf.

Football



FIRST ROW: P. Swartz, J. Addis, R. Shannis, I. Agard, L. Swetland, D. Fryer, D. Bennett, B. Lovell, G. Hayes, K. Santucci. SECOND: W. Willms, D. Sullivan, A. Rigi, D. Beach, J. LaValley, T. Polys, D. Dibble, R. Govin, D. Brown, T. Ensign. THIRD: G. Swartz, P. Swetland, J. Paquette, E. Scott, R. Tobias, E. Moran, D. LaMontagne. FOURTH: K. Day, B. Garrow, J. Burnett, Coach Miller, M. Ducloss, S. Deane, Coach Deslauries, Coach Law.

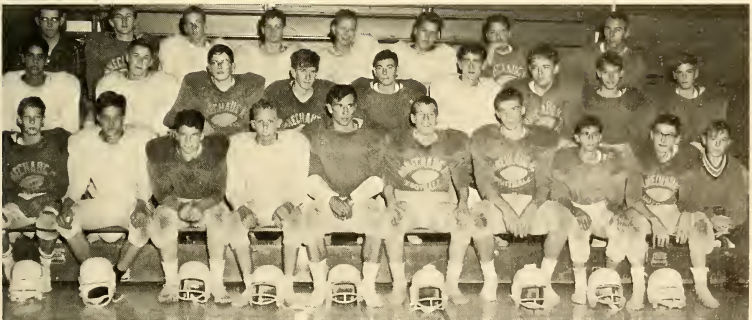


Scores

FALCONS		OPPONENTS
25.	East Longmeadow	.6
15.	Tantasqua	12
0.	Ludlow	.8
0.	Longmeadow	.0
0.	Palmer	10
6.	Enfield	19
14.	Commerce	.0
14.	South Hadley	.6

The Falcons began their season as usual prophesying the victorious season to come, but ended with one notable difference. They had stacked up an impressive 4-3-1 winning record and placed two members, Dale Fryer and Dick Dibble, on the Suburban League All-Star team. Play was bolstered greatly by new coach Richard Deslauries and the outstanding performance of captains Dale Fryer and Larry Swetland and seniors Gary Hayes, Bob Lovell, Don Bennett, Irv Agard, Ray Shannis and John Addis.

Freshman Team

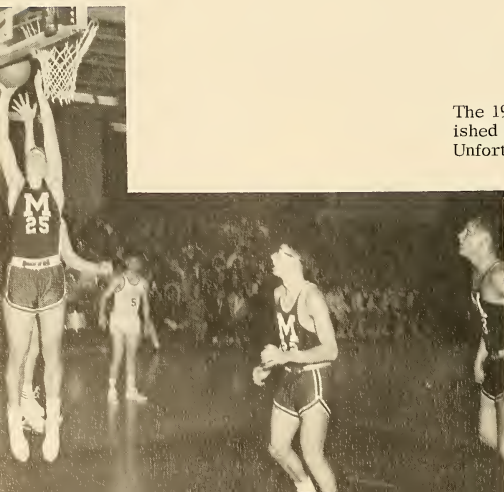


FIRST ROW: D. Richter, D. Belisle, D. Hammah, G. Trevallion, T. Geabeau, J. Addis, J. Wilkinson, G. Gould, K. Twining. SECOND: T. Checile, R. Sidleau, W. Samble, J. Evans, B. Cooke, R. Wallas, J. Bready, P. Kilpinski, E. Sharke. THIRD: G. Swartz, K. Koziol, P. Bennett, D. Hughes, T. Murphy, R. Streinharts, D. Gelinas, P. Kittredge, Coach Spencer.

Basketball



FIRST ROW: D. Fryer, B. Braskie, (co-captains). SECOND: Coach Gartner, R. Tobias, J. Shaughnessy, S. Fairbanks, G. Hayes, W. Willms. THIRD: R. Gross, R. Shults, D. Dibble, D. LaMontange, D. Brown.



The 1965 Varsity Basketball team finished with a very successful season. Unfortunately it had to end with a first place tie with Ludlow; each team completing fourteen wins and three losses. Highlight of the season was Dale Fryer's completing one thousand points in his four-year career of basketball. Outstanding players were Dale Fryer, Brian Braskie, Rick Gross, Rod Tobias, and John Shaughnessy.

Scores

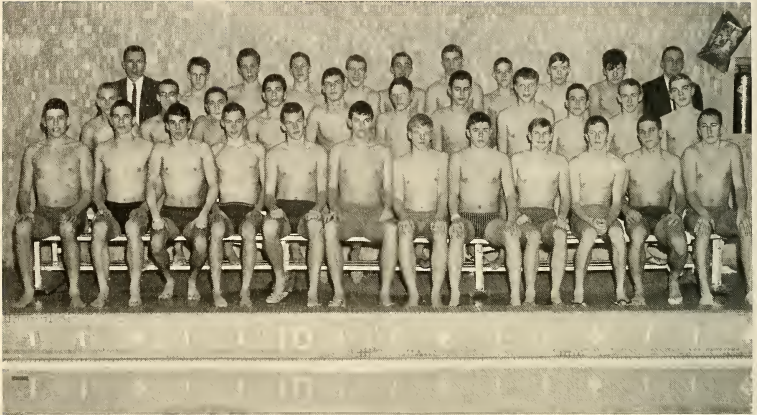


FALCONS	OPPONENTS	
70.	Enfield.	52
62.	Palmer.	48
63.	Ware.	40
76.	Longmeadow.	52
75.	East Longmeadow.	59
64.	Ludlow.	72
52.	Commerce.	64
63.	Agawam.	61
59.	East Longmeadow.	64
58.	Enfield.	45
61.	Palmer.	57
62.	Ware.	39
70.	Longmeadow.	51
50.	Easthampton.	48
69.	Ludlow.	56
75.	Agawam.	57
73.	East Longmeadow.	48



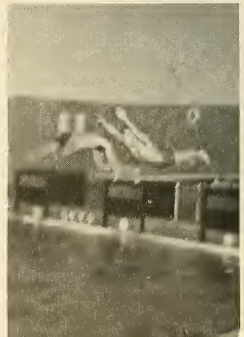
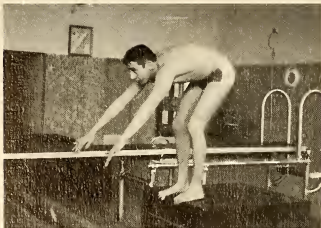
FIRST ROW: J. Haggerty, K. Twining, R. Parr, D. Lopata, T. Murphy, J. Jenkins, Coach Verani. SECOND: S. Deane, B. La Croix, R. Dougal, J. Kirzec, J. Evans, D. Maloney.

Swimming



FIRST ROW: A. Rigi, G. McCauly, T. DeMarco, D. Kaynor, J. LaValley, D. Beach, B. Hedlund, P. Reed, T. Campbell, B. Richmond, A. Kotis, J. Anderson. SECOND: J. Storm, E. Fleury, G. Swan, R. Bacon, S. Fancy, D. Hicks, D. Stevens, P. Swallow, D. Payne, E. Moran, M. Balogh. THIRD ROW: Coach Miller, T. Richards, D. Trevallion, B. Norcross, J. Addis, R. Kaynor, J. Wilkinson, J. Holtzinger, P. Doubleday, K. Kohornon, Coach Badger.

This year's Varsity Swimming team, as usual, finished with a winning season. Under the supervision of coaches Harold Miller and Jerry Badger, the team ended their season with a three place tie for second place with Classical and Chicopee. They also placed third in the Western Mass. Championships, and ninth at the State Swimming Meet. Outstanding swimmers this year were Joe Anderson, Tom Campbell, Alan Kodis and diver Robert Hedlund.





Scores

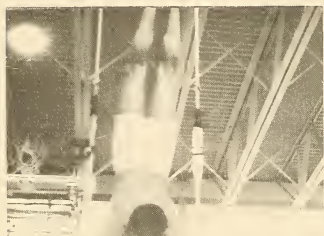
FALCONS	OPPONENTS	
58	Chicopee Comp.	41
61	Cathedral	34
47	Brookline	48
74	Northampton	20
51	Classical	44
41	Gardner	54
37	Holyoke	58
51	South Hadley	44
62	Wilbraham	32
45	Chicopee	50
73	Trade	22
56	Technical	39



Gymnastics



KNEELING: D. Hughes, B. Eldridge, B. Hansen, K. Kawynia. SECOND: S. Inkellis, D. Babineau, B. Fish, S. Sullivan, H. Armitage, B. Fish. THIRD: D. Mitchell, R. Paulk, D. Piccard, R. Thomson, J. Santucci, D. Harlow, Coach Alf Ehnstrom.





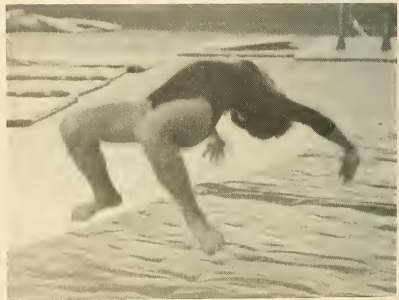
The Varsity Gymnastic team, despite the loss of many varsity men last year, turned out a winning season with seven wins and three losses under the supervision of coaches Ehnstrom and Kober. The team did exceptionally well at the Western Mass. Districts, placing first. Co-captains this year were Byron Fish and Dick Harlow.

Scores

FALCONS		OPPONENTS
111	Mt. Everett	.87
102	Tantasqua	.73
* 119	New Bedford	.111
	Technical	.93
111	U. of Mass. Frosh	.131
* 195	Andover	.111
	Winthrop	.61
103	Spfld. College Frosh	.118

Western Mass. Championship -- Falcons first place
 * score for triple meet.







HAMPDEN TRUCKING COMPANY

Furniture & Piano Moving

Phone JO 6-8822
24 East Longmeadow Road
Hampden, Mass.

P. E. MURPHY, INC.;

GUILD OPTICIAN

Telephone RE 3-3882
329 Bridge Street
Springfield, Mass.



One more deal before R.T. comes in.

BILL'S SNACK BAR

2805 Boston Road
No. Wilbraham, Mass.

SIXTEEN ACRES FOOD CENTER

"Try Our Fine Foods and
Prompt, Courteous Service"

Phone St 2-4114
1835 Wilbraham Road
Springfield, Mass.

Compliments of

UTILITY
MANUFACTURING CO.

2443 Boston Road
Wilbraham, Mass.



Free
24 HR.
BURNER
SERVICE

Mobil

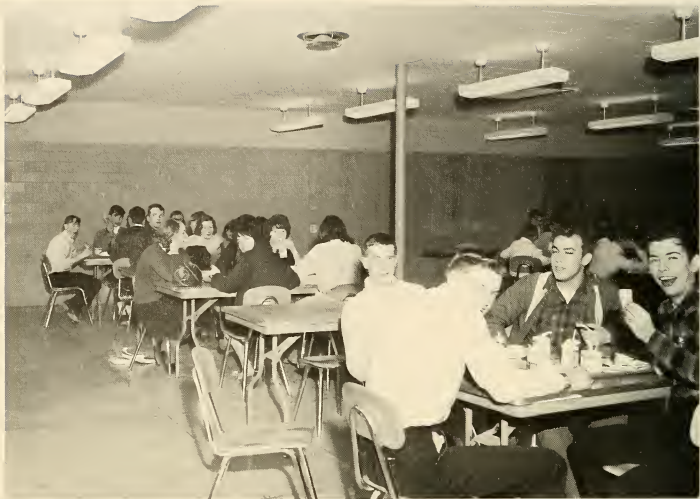
HEATING
OIL

SKORUPSKI BROS.
ALBANY, MASS

SKORUPSKI BROS.

SKORUPSKI BROS.

Compliments of
SKORUPSKI BROS.



THE YARDSTICK

Headquarters For
"Fashions by the Yard"

1192 Parker St.
Springfield, Mass.

POTTER'S SHOES

16 Acres Shopping Center
Shoes For The Whole Family
Palmer--next to Woolworth's
Springfield--next to Popular Market

Compliments of
the
STATE LINE
POTATO CHIP CO.

Compliments of
SUBURBAN PLASTICS
Railroad Ave.
North Wilbraham, Mass.

HOMER L. HATCH & SON

General Merchandise
Home of old-fashioned Store Cheese
Hampden, Mass.

Fun for all the Family

10 PIN BOWLING CENTER

Parties
Family
Leagues

Lucien L. Bourbeau

**BOURBEAU & HINCH
GENERAL INSURANCE**

34 Somers Road
Hampden, Mass.
JO 6-3415

Greetings From

BENNETT TURKEY FARM

Wilbraham, Mass.

INSURANCE



DOUGLAS M
Trevallion
REAL ESTATE

Residential * Commercial * Florida

Offices

LY 6-3821-RE 4-7644

2341 Boston Road

North Wilbraham, Mass.

TOWN & COUNTRY
BARBER SERVICE

Open

Tues. Through Fri.

9 A.M.-6 P.M.

Saturdays

8 A.M.-5 P.M.

Robert Tiernan, Proprietor

Somers Road at Meadowbrook Lane



Magnesium sulfate heptahydrate on the
rocks!

JORDON'S BOARDING KENNELS

New England's Astoria For Dogs

Year Around Boarding

Summer Air Cooled-Winter Heated

Our Services Include

Bath-Shampoo-Ears Cleaned

Nail Trim and Deflea

Tel. ST 2-2305 599 Tinkham Road Wilbraham

The class of '65 wishes to
express its most sincere thanks to

BERSELLI SALES

For the kind use of their car
For our Driver Education.

Authorized

Chevrolet

Oldsmobile

380 Main Street Wilbraham



Compliments of
the
HAMPDEN HOUSE, INC.

Wilbraham Motel

Free Movies in Rooms
Air-Conditioned
Swimming Pool
Phones--TV



"I'm throwing the peel outside the principal's office."

Compliments of
HAMPDEN DRUG STORE
Somers Road
Hampden, Mass.



Tel. RE. 6-4711

I. M. PRESS
FORMAL SHOP

"We Will Impress You With Our Service"

Correct Formal Attire

Tuxedos, Full Dress, Cutaways

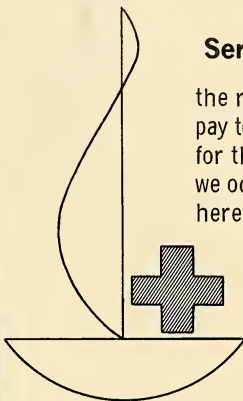
Strollers, White Dinner Jackets

All Accessories

326 Dwight St. Springfield, Mass.

Compliments of
TITO COIFFURES

Phone St 2-9628
1198 Parker Street



Service

the rent we
pay to God
for the space
we occupy
here on earth.

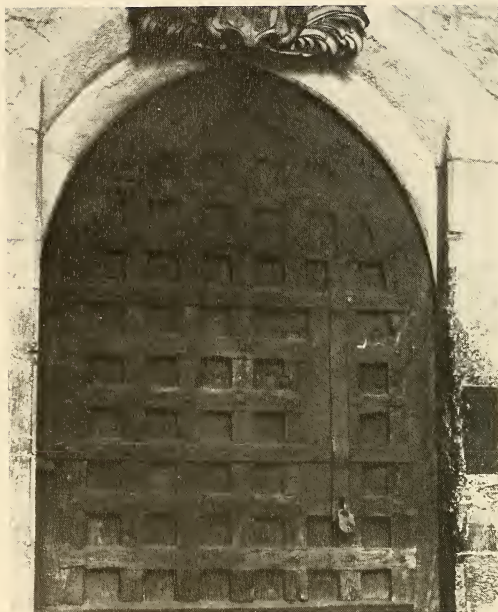
Compliments of
MARY LYON
NURSING HOME

Compliments of
CENTER SERVICE STATION
Wilbraham, Mass.

RICE FRUIT FARM

Apples-Peaches-Plums-Pears
Certified Sweet Cider
Honey and Preserves
Apple Gift Cartons
757 Main Street
Wilbraham, Mass.

**The Only Thing
Constant Is Change**



Our world has an insatiable desire for change . . . for the new and different. But change for the sake of change is futile. It is our job to see that the good things in life remain constant, and the only thing constant is improvement.

SHAWINIGAN RESINS CORP.

A Subsidiary of Monsanto
Springfield, Massachusetts

**GREEN VALLEY
PHARMACY**

'Round the Clock
Prescription Service
Day or Night
Phone JOhnson 6-3348
Main St.
Center of the Village
Hampden, Mass.



King Tut in McCarthy's court . . .

Compliments of
BEACON VIEW LUNCH

2523 Boston Road
Wilbraham, Mass.

NIMS LUMBER

Lumber & Building Materials
Heritage Home Builder - Dealer

Tel. 233-7581
Thorndike St. (Rt. 32)
Palmer, Mass.



BRUNO'S GULF SERVICE

2785 Boston Rd., Cor. Maiden Lane
Bus. 596-8873 Wilbraham, Mass.
Tires - Repairs - Batteries



Congratulations To the Class of '65





from the Girls of the Class of '65!



VISIT
YOUR



1865 Boston Road, Wilbraham
1200 Parker Street, Sixteen Acres





Wait a minute, I can't see!

Compliments of

THE SPRINGFIELD
OFFICE SUPPLY CO.

Phone 734-5691
1615 Main Street
Springfield, Mass.

NEWHOUSE AUTOMOTIVE SERVICE

Complete Brake Service

Distributors:

Westinghouse Air Brakes-Bendix Vacuum Brakes

Bendix Brake Lining

Phone RE 6-7207 - RE 6-7208

64 Howard Street

Springfield, Mass.

L. G. BALFOUR CO.

Class Ring Division

And

TAYLOR YEARBOOK CO.

Gron P. Lloyd
Telephone: 525-7710

P. O. Box 305
East Longmeadow, Mass.

HAMPDEN COMMUNITY
MARKET

Quality Foods
Choice Meats
Low Low Prices
S & H Stamps

7 A.M. - 9 P.M. Mon. - Sat.

Somers Road
Hampden, Mass.



Let's see now . . . the boom has gotta' be
in here some place!

HARDWARE CENTRE

Scotts Fertilizers
Turf Builder
Best for Lawns
Glidden Paints

461 Main St.
Wilbraham, Mass.

Rentals Ly 6-6365



Your friendly store for
all your drug needs

LY 6-6121

Free Delivery

Headquarters for

Fanny Farmer

CANDIES

WALTER V. SALUSTRI

Reg. Pharmacist-Owner

Rx EMERGENCY
AFTER HOURS

LY 66554

STORE HOURS 8:30 A.M. TO 9: P.M. -- SUNDAY 8 A.M. TO 6 P.M.

LUDLOW SAVINGS BANK

Wilbraham Branch

464 Main Street
Wilbraham, Mass.

Banking Hours for Your Convenience
Monday through Thursday 9:00 A. M. to 3:00 P. M.
Friday 11:00 A. M. to 8:00 P. M. Continuous

CHARLES E. DOREY
GERALDINE E. DOREY
QUALITY MARKET
2797 Boston Road
No. Wilbraham, Mass.
01067

WILCOX
AUTO SCHOOL

Ludlow, Mass.
583-8944

A. R. REID, INC.

100 State Street
Springfield 3, Mass.

Office Furniture
And Supplies

Get Your Office Needs
at Reid's
RE 9-7385



Mimnechaug munch time . . .

GOOD LUCK
TO THE CLASS OF '66
FROM
THE CLASS OF '65

BELLI'S RESTAURANT

Phone Ly 6-3543
Boston Road
North Wilbraham, Mass.



"It kinda' hurts when I touch it." "Tsk, tsk, tsk!"

Compliments of

WHEELER'S GARAGE
Repairing-Bodywork
Across from Nine Mile Pond

Compliments of

**DAMON'S FURNITURE
CENTER**
Railroad Ave.
Opposite Nine Mile Pond



**THE VILLAGE STORE
AT THE CENTER**

Phone 566-8575



Meats-Groceries
Produce

HAMPDEN GULF SERVICE
Tires, Batteries, Accessories
Expert Lubrication
At the end of Main St. on
Somers Road
Hampden, Massachusetts

Compliments of

A FRIEND

STEARNS AND WESTCOTT

Realtors

Appraisals and Financing

Town and Country Branch 465 Main Street

Wilbraham, Massachusetts

LYric 6-6123

Member Multiple Listing Service

153 Longmeadow Street Longmeadow Massachusetts

LOcut 7-3361

GREEN ACRES FRUIT FARM

Apples, Peaches, Plums, Grapes
and Sweet Cider

APPRAISALS MADE

LY 6-4616

LARRO'S AUCTION CENTRE

FILL YOUR NEEDS AT YOUR PRICES

2445 BOSTON ROAD

N. WILBRAHAM, MASS.

Compliments of

16 ACRES LAUNDERCENTER
DRY CLEANING VILLAGE



WILBRAHAM PHARMACY

2769 Boston Road
Wilbraham, Mass.



Compliments of your

Student Council

Sponsors of your
foster child
Bui Van Hi

THYBERG REALTY

Phone S Tate 2-2027
1236 Parker St.
Corner Wilbraham Road



Compliments of
LAKESIDE RESTAURANT

ENFIELD AUTO ELECTRIC
Rebuilding Automotive Electric Parts

224 West Main St.
Hampden, Mass.

It's Been a Pleasure . . .
To Be Your Year-Book Photographer.

Our Sincerest Wishes for a Successful Future
to Minnechaug Regional High School's
Class of '65

HAUSAMANN STUDIO

PORTRAIT PHOTOGRAPHERS

Springfield, Mass.



Monitor on the war path . . .

MORGAN & GREEN BUILDERS

General Contracting
Custom Cabinets

339 Maynard Road
North Wilbraham, Mass.

Snow Plow
Beat The Rush--Be On My List Early

ROBERT MACAULAY

BOB
596-3807

"With truck and tractor I'll clear your drive--
on time to work you'll arrive."

DAVE
596-3526

Best Wishes of

THE NIXON COMPANY
Indian Orchard, Mass.



"Today's my lucky day 'cause Mr. Law
gave me \$5 to keep it at 1!"

The Charles Yenian Co., Inc.
ORIENTAL
BROADLOOM RUGS

57 PEARL ST., SPRINGFIELD, MASS.



"I just swallowed a canary."



"I am not as young as I
used to be."

"To Serve You Best"

KATHLEEN-FLYNN CO.

Telephone
781-2883-566-8869

P.O. Box 283
232 North Road
Hampden, Mass.

TRAVEL TRAILER CENTER
Apache and Shasta Trailers
Dreamer Pickup Campers
Hitches and Accessories

Tel 783-6116
1872 Boston Rd. Wilbraham, Mass.

DIFFERENT . DISTINCTIVE . INDIVIDUAL . . .
A beautiful community of modern and rustic Cape
Cods, Colonials and Contemporary Homes. Two
to five bedrooms with plenty of closets. Living
rooms with fireplaces, family rooms, dining
rooms and dining areas. Kitchens with RCA
Whirlpool built-in appliances. Walkout basements
and two car garages. Custom built homes where
the quality is always above the price. Homes
from \$20,000.

"OLD CARRIAGE VILLAGE"

Off Tinkham Road just west of Stony Hill Road.



Call her a grind!

NAOMI'S COIFFURES
Hair Stylists

Phone LY 6-4492
2341 Boston Road
Wilbraham, Mass.

BELMONT DRIVING SCHOOL

Complete Driver Education
and
limited participation
commercial--over 25

Insurance Reduction

177 State Street
Springfield, Mass.
Tel. RE 9-0334

Best Wishes
to the
Class of '65
From

**WILBRAHAM
BARBER SHOP**

Colonial Beauty Salon

BOLDUC SERVICE STATION

354 Main Street
Indian Orchard, Mass.

Compliments of

**HAMPDEN CANDY &
TOBACCO CO.**

1028 Main Street
Springfield, Mass.

MANUFACTURERS OF TOOLS & FINE PRODUCTS

LAFFERT INDUSTRIES

60 RAVENWOOD DRIVE
P. O. BOX 98
LUDLOW, MASSACHUSETTS

ERNEST A. LAFFERT

JU 3-6586



Shut up or I'll change your number!

We are licensed by the Registrar of Motor Vehicles to conduct a Full Driver Education course.

All Graduates of this course will receive a certificate from the Registrar of Motor Vehicles which will entitle them to a full reduction on their Automobile Insurance.

The Oldest Automobile School In The United States

FAIRBANKS AUTO SCHOOL

EST. 1909
Tel. RE 3-0458
20 Dwight St.
Springfield, Mass.



"Little Sally Saucer"

Musical Instruments
SALES • RENTALS • REPAIRING
SPECIALTY PRICING ON
A BUMP TO DOWN BASS
CORPUS & NECK COMBS

DRUM CORPS
CORPUS & NECK COMBS

PRIVATE
Instruction
In Brass
Instrument
Technique

P.A. BOGNETT, Prop.
The DRUM SHOP

RE 4-8309 THE STATE OF MASSACHUSETTS RE 3-3935

WALT'S AUTO BODY

Appraisals & Collision Work
Auto & Truck Painting
Radiator & Glass Work
24 Hour Towing

Walter L. Black, Prop.
Tel. JO 6-3060
224 Main St.
Hampden, Mass.



The **LLOYD-M. HOOVER**
INSURANCE AGENCY, INC.

Insurer
466 Main Street
Wilbraham, Mass.

Complete And Dependable Homeowner's Insurance

Telephone Wilbraham-596-3452

466 Main Street
Wilbraham, Mass.

May We Help You With Our
COMPLETE Family Laundry
& Dry Cleaning Service?

Lux Flake
Washing

Sanitone
Cleaning

Belmont laundry
and CUSTOM  dry CLEANERS

Free Pick-up & Delivery
333 Belmont Avenue
Dial RE 6-3615 Since 1907
"Let One Call Do It All"
Send Your LAUNDRY With Your
DRY CLEANING



OPALINSKI'S MARKET

Phone LI 3-1324
101 Stony Hill Road
Wilbraham, Mass.

Congratulations To The Class of '65
From

HERCULES CLEANERS

The House of Workmanship
A. J. GOSS

LInden 3-1989
376 Main Street
Indian Orchard, Mass.

Alpine 3-5111
183 No. Pleasant St.
Amherst, Mass.

Sponsors

"Bob and Bet"

Mr. and Mrs. Walter G. Bruska

Mr. and Mrs. Ernest O. Scott

Mr. and Mrs. Edward Santucci

Christopher and Peter Rabbit

Mr. and Mrs. Thomas O'Neil

Dusty and Bounce

To Jackie from H.R. F7

Dr. and Mrs. Leroy J. Kendrew

Mr. and Mrs. E. Kerr

Mrs. P. Dygon

Mrs. Ellis

Mrs. Tupper

A Spotted Pooch

Mr. and Mrs. Frederick W. Smith

Mr. and Mrs. F. T. Richardson

Mr. and Mrs. Edmund F. Dantas

Pandi and Keith

Rick and Cindy

Dr. and Mrs. M. Nakashian

Cindy and Walt!

Mr. and Mrs. Arthur D. Tripp

Mr. and Mrs. Fred A. Chechile

The "ee-ya-ha" Girls (Sr.)

Sponsors

Mr. and Mrs. Richard I. Trenholm

Mr. and Mrs. Joseph J. Chechile

Dayle and Ralph

Root

"Lenny and Candy"

Mr. and Mrs. Alfonso Bocchino

Mr. and Mrs. W. T. Pray

Mr. and Mrs. B. Marcili

Mr. and Mrs. Howard Led Duke

"Laurel and Hardy"

Mr. and Mrs. Rudolph Bayerle, Jr.

Mr. and Mrs. Charles Thompson

Mr. and Mrs. Adolph J. Soverow

Mr. and Mrs. Albert Schonback

T. AND P.F.E. - H.R. D13

Mr. and Mrs. Albert Maus

Mr. and Mrs. Stanley J. Pabis

Mr. and Mrs. Victor S. Kodis

Mr. and Mrs. Sidney Low

Mr. and Mrs. Theodore S. Bernard, Sr.

Stephen W. Fairbanks

Root

Mr. and Mrs. Emile Babineau

Mr. and Mrs. Wilfred Hayes

Sponsors

Gary and Moe

Punkin and Dith

Mr. and Mrs. Frederick Post

Mr. and Mrs. Robert D. Meacham

Mrs. Edward Moynahan

Pooh and Piglet

Mr. and Mrs. Ronald Nobbs, Jr.

"Soup and Cinwich"

Mr. and Mrs. C. A. Brooks

Russell, Connie, and Robb

Ric and Donna

Mr. and Mrs. Chester Thorndike, Jr.

Re Flectors

Jimmy and Alice

Has Been

Mr. and Mrs. Frank G. Shannis

Mr. and Mrs. Antonio Esposito

Mr. and Mrs. Harold K. Miller

Mr. and Mrs. G. E. Peterson

Mr. and Mrs. J. A. Badger

Sandy Hill

Class of '66 is the best

Class of '65 is the bestest!!!



WILBRAHAM PUBLIC LIBRARY



Baseball



FIRST ROW: S. Sullivan, G. Johnson, R. Gaudette, J. Twichell, D. Maloney, D. Sullivan, R. Thompson, B. Fish, R. Shannis, Coach Enstrom. SECOND: J. Smith, R. Vautrain, J. Burnette, W. Damon, P. Schonbak, D. LaMontagne, T. Polys, D. Lopata, H. Armitage.

Scores

FALCONS		OPPONENTS
1	Palmer	2
6	Monson	1
1	East Longmeadow	5
0	Ware	3
4	Longmeadow	1
3	South Hadley	0
2	Monson	1
3	Palmer	7



FIRST ROW: K. Koziol, J. Jenkins, T. LedDuke, C. Kapinos, R. Montgomery, K. Twining, T. Murphy, J. Haggerty, CoachLarson, K. Howard. SECOND: Coach DesLauries, J. Kirsick, K. Moore, J. Garneau, M. Opalinski, D. Lovelette, C. Samble, B. Dougal, R. Binder, J. Brewster, D. Castanguay, P. Bennet, D. Behlsle, A. Gagne.

Tennis



FIRST ROW: G. Petzold, B. Pinney, T. DeMarco, E. Sharpe, B. Kaynor, B. Olmstead, C. Beverly, T. Madera, M. Quinn, A. Murphy. SECOND: Coach Spencer, G. Swartz, K. Day, W. Mueller, W. Sambol, R. Chase, M. Winetroun, R. Newsome, S. Rollins, M. Komin, D. Swartz, R. Vaillancourt.

Scores

FALCONS	OPONENTS
1	Cathedral 8
7	East Longmeadow 2
0	Classical 9
8	East Longmeadow 1
4	Agawam 2
1	Tech 0
5	Suffield 3

The 1965 Varsity Tennis team had a successful season. Leading the team, which showed good depth, were Mark Winetroun, Carleton Beverly, Russ Newsome, Wes Mueller, and Mike Quinn.

Track

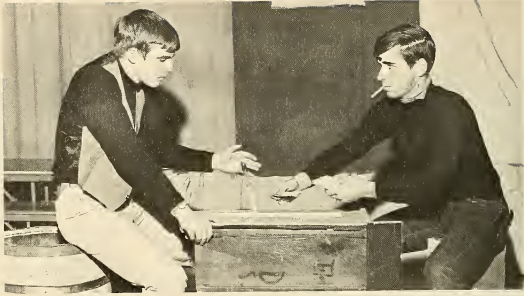


FIRST ROW: Coach Lawson, J. Hurd, K. Kowyina, M. Mayer, J. Richmond, J. Addis, J. Storm, T. Campbell, F. Leary, B. Fish, T. Ensign. SECOND: T. Gebeau, R. Keddy, F. Nickles, D. Kaynor, A. Righi, R. Lewenzick, S. Robison, D. Bennett, L. Plate, B. Richmond, A. Kodis. THIRD: Coach Thompson, B. Lovell, J. Evans, N. Meril, B. Candage, R. Alarie, R. Dibble, R. Paulk, R. Minor, J. Danforth, D. Brown, J. Shaughnessey, J. Addis, Coach Verani.

Scores

FALCONS		OPPONENTS
113	Palmer	18
108	Southwick	23
76	Chicopee Comp.	55
78	Longmeadow	53
88	Classical	43
72	South Hadley	59
80	East Longmeadow	47

The 1965 Varsity Track team once again finished with a very successful season. They won the Valley Wheel Championship and also captured the Western Massachusetts AA Championship . . . thus adding more glory to their outstanding record.



Carousel

April 30 & May 1, 1965





South



Pacific





May 15, 1965

Band



Senior Class, 1965





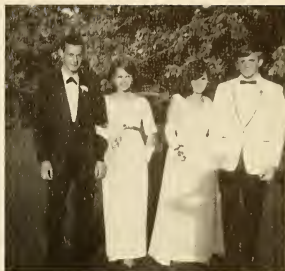


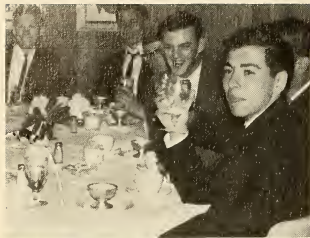
Fantasia



Senior Prom

June 4, 1965











Destinations of the Class of 1965

John Addis, II	Northwestern University
Irving Agard, III	Trinity College, Connecticut
Douglas Allen, Jr.	Bryant College
Jeffrey Allen	Franklin Pierce College
John Anderson	Westworth Institute
Joseph Anderson	Champlain College
Harold Armitage	United States Air Force
Michael Ashe	Western New England College
Lenore Babineau	University of Massachusetts
Joseph Baker	United States Navy
Alice Ballou	Mansfield Beauty Academy
Carol Barnes	Central Connecticut State College
Joanne Bateson	Central Connecticut State College
Susan Bayerle	Springfield Hospital School of Nurs.
Cynthia Bean	Bridgewater State College
Bernard P. Beaudoin	Norwich University
Donald Bennett	Fitchburg State College
Patricia Bernard	Harcum Jr. College, Pennsylvania
John Bernet	Package Machinery Co.
Carleton Beverly	Florida Southern College
Lester Bliss	Interstate Tire and Brake Store
Brian Braskie	St. Anselm's College
James Bready	Postgraduate course -- Minnechaug
Virginia Brooks	Elmira College
Charlotte Bruska	Cornell University
Thomas Campbell	University of Virginia
Nancy Caroglanian	Russell Sage College
Wendell Chamberlain, Jr.	Babson Institute of Business
Alan Christensen	University of Massachusetts
Phyllis Clark	Mass. Mutual Life Insurance Co.
Sandra Clarkson	Ithaca College
Frederick Colton	Curry College
Walter Damon	Rider College
Kenneth Day	Lafayette College
Charlene Deane	Medical Assist. Program -- Spfld. Trade
Ramona DeMarco	Forsyth Dental School
Jane Denniss	Southern Connecticut State College
Harriet Dexter	Central Connecticut State College
Brian Dollar	United States Navy
Kathryn Donohue	Rivier College
William Dougal	St. Michael's College
Donald Eldredge	United States Navy
Robert Esposito	Carnegie Institute of Technology
Stephen Fairbanks	Ithaca College
Robert Fancy	United States Navy
Patrick Fleming	Kalamazoo College
Colleen Flynn	Anesthesiology training -- Dr. Foster
Judith Foster	Westfield State College
Judith Francis	Chandler School for Women
Barbara Frost	Wagner College
Dale Fryer	Ithaca College
Cathryn Gagne	Dickerman Mfg. Co.
Lawrence Godfrey	United States Navy

Meredith Goodwin	Madison College, Virginia
Kenneth Gozdowski	University of Rhode Island
Marion Grant	Shriners' Hospital
Richard Gross	Worcester Polytechnic Institute
Barbara Hale	Spfld. Monarch Insurance Co.
Richard Harlow	University of Rhode Island
Carol Hayes	Hartwick College
Gary Hayes	University of Bridgeport
Robert Hedlund	Springfield College
Steven Herter	Ithaca College
Charlotte Hicks	Framingham State College
Ralph Hill	Boston University
Sandra Hill	Westfield State College
Roger Hitchcock	United States Navy
Joseph Holtzinger	Paul Smith's College
David Hutchinson	University of Vermont
Grant Ingle	Amherst College
Carolyn Iwasinski	Lowell State College
Sandra Jenkins	Earlham College
Diana Jones	St. Louis City Hosp. Sch. of Nurs.
Gloria Jordan	Western College for Women
Clare Ann Keefe	University of Hartford
Patricia Kendrew	Mount Holyoke College
Christine Kozyra	Bryant College
George Krohne	Holyoke Community College
Joanne LaFave	Andover Institute
Barbara Landon	University of Bridgeport
Margaret Law	American International College
Frederic Leary	Springfield Preparatory School
Doris LedDuke	Westbrook Jr. College
Laurel Lindsay	Colby Jr. College
Robert Linscott	North Carolina State College
Adrienne Lioce	Glens Falls Hospital -- X-Ray Tech.
Richard Lockwood	Syracuse University
Robert Lovell	University of Notre Dame
David Low	Berklee School of Music
Laurie MacKay	Elmira College
Lynn Maus	University of Massachusetts
Arthur Menard	Mass. Mutual Life Insurance Co.
Susan Menard	Leominster Hosp. Sch. of Nurs.
Donna Miller	Becker Jr. College
David Minor	Package Machinery Co.
Candis Mireault	Andover Institute
James Moccio	Champlain College
Richard Moynahan	Farm Engineering and Supply Co.
Wesley Mueller	Central Connecticut State College
Alexander Murphy, III	Stockbridge School of Agriculture
Astrid Nakashian	Skidmore College
Russell Newsome	American International College
Noreen Nobbs	Becker Jr. College
John B. Nowell	Wesley Jr. College
Patricia O'Neil	Champlain College
Thomas O'Neil	Lowell Technological Institute
Theresa Ouimet	Valley Bank and Trust Co.
Robert Pabis	New England College
Patricia Peterson	Bryant College

Jeanne Picard
Carol Plumb
Susan Post
Joyce Pray
Alice Pyzocha
Michael Quinn
Loring Reed
Diane Richardson
William Richmond, III
Scott Robison
Patrick Rossall
Donna Roy
Kenneth Santucci
Peter Schonback
Bruce Schulze
Maureen Scott
Laurie Shannis
Raymond Shannis
Carolyn Sharpe
Richard Shults
Raymond Sidleau
Joyce Simonoko
Jean Simpson
Helen Skorupski
Maureen Smith
Cheryl Soverow
Daniel Starczewski
Lynda Stevens
Stephanie Stewart
Steven Sullivan
Janet Swallow
Douglas Swartz
Lawrence Swetland
Richard Talbot
David Thompson
Leslie Thompson
Patricia Thurlow
Dayle Tripp
Mark Winetrou
Carol Bingle
Barbara Brittain
Richard Brown
Jane Bulger
Marsha Cady
Barbara Delude
Byron Fish
Yvonne Frost
Karen Jodoin
David Joyce
Alan Kodis
Alan McDonald
Robert Minor
Christine Welch
Linda White

St. Vincent Hosp. Sch. of Nursing
Mass. General Hosp. Sch. of Nursing
American International College
University of Hawaii
Spfld. Monarch Insurance Co.
Union College, Kentucky
University of Bridgeport
University of Maine
Bates College
Brigham Young College
Ithaca College
Andover Institute
Wentworth Institute
Holyoke Community College
Springfield College
Regis College
Skidmore College
St. Benedict's College
Madison College, Virginia
Pratt & Whitney
H. S. Prescott Inks, Inc.
Sears, Roebuck & Co.
University of Massachusetts
Framingham State College
Valley Bank and Trust Co.
Green Mountain Jr. College
University of Massachusetts
University of Massachusetts
George Washington University
Holyoke Community College
Bates College
Mass. Institute of Technology
Rensselaer Polytechnic Institute
Gorham State College
Wheaton College, Illinois
Springfield College
St. Vincent Hosp. Sch. of Nursing
Sears, Roebuck & Co.
Union College, New York
Undecided
Undecided
Undecided
Undecided
Undecided
Undecided
Undecided
Undecided
Undecided
Undecided
Undecided
Undecided
Undecided
Undecided
Undecided
Undecided
Undecided
Undecided
Undecided
Undecided
Undecided
Undecided





